

LEA Name : Central Bucks SD
Address : 20 Welden Dr
Doylestown , PA 18901

County : Bucks
AUN Number : 122092102
LEA Type : SD

Annual Financial Report Accuracy Certification Statement

For Fiscal Year Ending
6/30/2017

Pennsylvania Department of Education

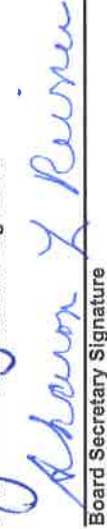
&

Office of Comptroller Operations

PDE-2056: Intermediate Unit
PDE-2057: School District, AVTS/CTC, Charter School,
and Special Program Jointure

CERTIFICATION: By signing this page I agree that the electronic data submitted is a complete and accurate statement of the financial operations and status of the local education agency for the fiscal year. It has been prepared in accordance with generally accepted accounting principles and established Commonwealth of PA reporting guidelines.


Chief School Administrator Signature


Board Secretary Signature


Date


Date

Suzanne Vincent

Contact Person

svincent@cbsd.org

Contact Person E-mail Address

(267)893-2077

Contact Person Telephone Number

(267)893-5800

Contact Person Fax Number

Ext :

Audit Certification

Annual Financial Report:

For Fiscal Year Ending 6/30/2017

(Pursuant to PA School Code Section 218(b))

LEA Name : Central Bucks SD
AUN Number : 122092102
County : Bucks

Audit Certification Due:
12/31/2017

This certification is applicable to the Annual Financial Report data submitted through the Consolidated Financial Reporting System on: 1/11/2018 Date

Auditing Firm:

Maille LLP
PO Box 680
Doxs, PA 19456-0680

Auditor Contact Name: Andrew T. Stear

Auditor Phone: 610-482-3190

Auditor E-mail: AStear@maille.com

CERTIFICATION: By signing this page I agree that the financial statements of the school have been properly audited as noted above pursuant to Article XXIV, and in the auditor's professional opinion, the Annual Financial Report (PDE-2057) submitted on the date referenced is materially consistent with the audited financial statements.

Chief School Administrator

J. J. Kopel
Signature

1-16-18
Date

Board Secretary

Sharon Y. Reiner
Signature

1/17/18
Date

Suzanne Vincent

Contact Person

svincent@cbsd.org

Contact Person E-mail Address

(267)893-2077

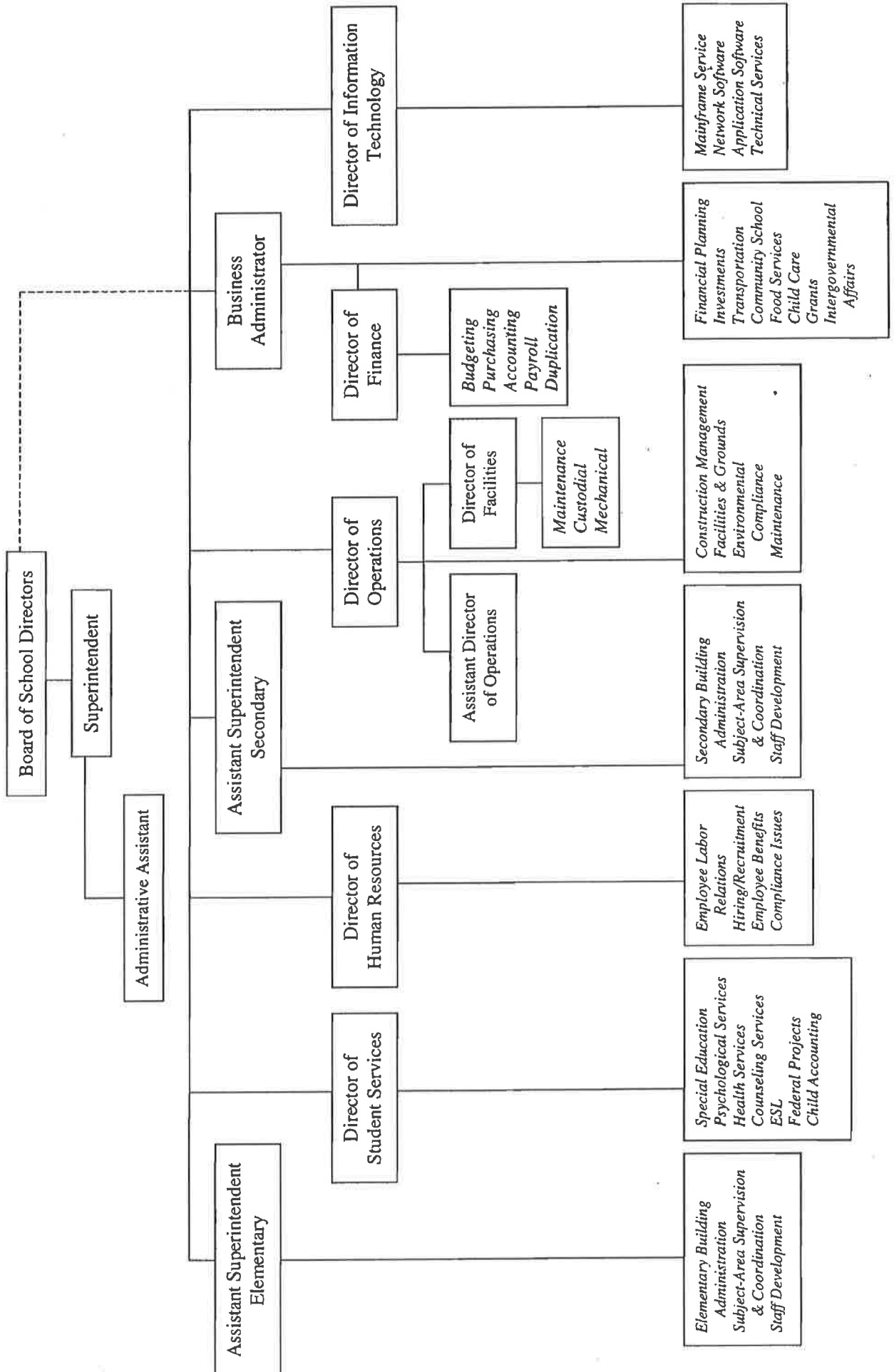
Contact Person Telephone Number

(267)893-5800

Contact Person Fax Number

Ext :

Central Bucks School District Organization Chart



Amounts Expressed in Whole Dollars

	<u>General Fund</u> <u>(10)</u>	<u>Public Purpose Trust</u> <u>(27)</u>	<u>Other Compt Approved</u> <u>(28)</u>	<u>Athletic / Activity</u> <u>(29)</u>	<u>Capital Reserve (690.</u> <u>1850)</u> <u>(31)</u>
Assets And Deferred Outflows Of Resources					
Assets					
0100 Cash and Cash Equivalents	48,429,531				
0110 Investments	2,945,000				
0120 Taxes Receivable	7,387,229				
0130 Due From Other Funds	95,373				
0141 Due From Other Governments					
0142 State Revenue Receivable	11,257,396				
0143 Federal Revenue Receivable	1,137,454				
0145 Other Intergovernmental Revenue Receivable					
0146 Due from Primary Government					
0147 Due from Component Unit					
0150 Other Receivables	310,378				
0170 Inventories	53,128				
0180 Prepaid Expenses (Expenditures)	4,000,819				
0190 Other Current Assets					
Total Assets	\$75,616,308				
0910 Deferred Outflows of Resources					
Total Assets And Deferred Outflows Of Resources	\$75,616,308				

Amounts Expressed in Whole Dollars

	<u>Capital Reserve (1431)</u> <u>(32)</u>	<u>Other Capital Projects</u> <u>Fund</u> <u>(39)</u>	<u>Debt Service</u> <u>(40)</u>	<u>Permanent</u> <u>(90)</u>	<u>Total Governmental</u> <u>Funds</u>
Assets And Deferred Outflows Of Resources					
Assets					
0100 Cash and Cash Equivalents		661,788	19,823,826		68,915,145
0110 Investments		29,122,590			32,067,590
0120 Taxes Receivable					7,387,229
0130 Due From Other Funds					95,373
0141 Due From Other Governments					
0142 State Revenue Receivable					11,257,396
0143 Federal Revenue Receivable					1,137,454
0145 Other Intergovernmental Revenue Receivable					
0146 Due from Primary Government					
0147 Due from Component Unit					
0150 Other Receivables					310,378
0170 Inventories					53,128
0180 Prepaid Expenses (Expenditures)					4,000,819
0190 Other Current Assets					
Total Assets		\$29,784,378	\$19,823,826		\$125,224,512
0910 Deferred Outflows of Resources					
Total Assets And Deferred Outflows Of Resources		\$29,784,378	\$19,823,826		\$125,224,512

Amounts Expressed in Whole Dollars

	<u>General Fund</u> <u>(10)</u>	<u>Public Purpose Trust</u> <u>(27)</u>	<u>Other Compt Approved</u> <u>(28)</u>	<u>Athletic / Activity</u> <u>(29)</u>	<u>Capital Reserve (690.</u> <u>1850)</u> <u>(31)</u>
Liabilities And Deferred Inflows Of Resources And Fund Balances					
Liabilities					
0400 Due to Other Funds					
0411 Due to Other Governments					
0412 Due to Primary Government					
0413 Due to Component Unit					
0420 Accounts Payable	4,962,480				
0430 Contracts Payable					
0440 Current Portion of Long-Term Debt					
0450 Short-Term Payables					
0461 Accrued Salaries and Benefits	1,345,342				
0462 Payroll Deductions and Withholding	21,183,912				
0480 Unearned Revenues	6,220,463				
0490 Other Current Liabilities					
Total Liabilities	\$33,712,197				
0950 Deferred Inflows of Resources					
Fund Balances					
0810 Nonspendable Fund Balance	4,114,299				
0820 Restricted Fund Balance					
0830 Committed Fund Balance					
0840 Assigned Fund Balance	16,570,981				
0850 Unassigned Fund Balance	21,218,831				
Total Fund Balances	\$41,904,111				
Total Liabilities, Deferred Inflows Of Resources And Fund Balances	\$75,616,308				

Amounts Expressed in Whole Dollars	<u>Capital Reserve (1431)</u> <u>(32)</u>	<u>Other Capital Projects</u> <u>Fund</u> <u>(39)</u>	<u>Debt Service</u> <u>(40)</u>	<u>Permanent</u> <u>(90)</u>	<u>Total Governmental</u> <u>Funds</u>
Liabilities And Deferred Inflows Of Resources And Fund Balances					
Liabilities					
0400 Due to Other Funds		85,454			85,454
0411 Due to Other Governments					
0412 Due to Primary Government					
0413 Due to Component Unit					
0420 Accounts Payable		1,150,238			6,112,718
0430 Contracts Payable					
0440 Current Portion of Long-Term Debt					
0450 Short-Term Payables					
0461 Accrued Salaries and Benefits					1,345,342
0462 Payroll Deductions and Withholding					21,183,912
0480 Unearned Revenues					6,220,463
0490 Other Current Liabilities					
Total Liabilities		\$1,235,692			\$34,947,889
0950 Deferred Inflows of Resources					
Fund Balances					
0810 Nonspendable Fund Balance					4,114,299
0820 Restricted Fund Balance					
0830 Committed Fund Balance		2,743,493			2,743,493
0840 Assigned Fund Balance		25,805,193	19,823,826		62,200,000
0850 Unassigned Fund Balance					21,218,831
Total Fund Balances		\$28,548,686	\$19,823,826		\$90,276,623
Total Liabilities, Deferred Inflows Of Resources And Fund Balances		\$29,784,378	\$19,823,826		\$125,224,512

Amounts Expressed in Whole Dollars	<u>General Fund</u> <u>(10)</u>	<u>Public Purpose Trust</u> <u>(27)</u>	<u>Other Compt Approved</u> <u>(28)</u>	<u>Athletic / Activity</u> <u>(29)</u>	<u>Capital Reserve (690.</u> <u>1850)</u> <u>(31)</u>
Revenues					
6000 Revenue from Local Sources	256,467,406				
7000 Revenue from State Sources	72,167,030				
8000 Revenue from Federal Sources	2,379,630				
Total Revenues	\$331,014,066				
Expenditures					
1000 Instruction	179,969,022				
2000 Support Services	91,685,014				
3000 Operation of Non-Instructional Services	7,774,381				
4000 Facilities Acquisition, Construction and Improvement Services					
5110 Debt Service	16,068,194				
5130 Refund of Prior Year Revenues / Receipts					
Total Expenditures	\$295,496,611				
Excess (Deficiency) Of Revenues Over Expenditures	\$35,517,455				
Other Financing Sources (Uses)					
9110 Face Value of Bonds Issued					
9120 Proceeds from Refunding of Bonds					
9130 Bond Premiums					
9200 Proceeds from Extended-Term Financing					
9300 Interfund Transfers - IN					
9400 Sale of or Compensation for Loss of Fixed Assets	9,537				
9710 Transfers from Component Units					
9720 Transfers from Primary Governments					
9910 Other Financing Sources Not Listed in the 9000 Series					
9990 Insurance Recoveries					
5120 Debt Service – Refunded Bonds					
5150 Bond Discounts					
5200 Interfund Transfers – Out	28,646,000				
5300 Transfers Out to Component Units/Primary Governments					
Total Other Financing Sources (Uses)	(\$28,636,463)				

Amounts Expressed in Whole Dollars	<u>Capital Reserve (1431)</u> <u>(32)</u>	<u>Other Capital Projects</u> <u>Fund</u> <u>(39)</u>	<u>Debt Service</u> <u>(40)</u>	<u>Permanent</u> <u>(90)</u>	<u>Total Governmental</u> <u>Funds</u>
Revenues					
6000 Revenue from Local Sources		216,778	168,176		256,852,360
7000 Revenue from State Sources					72,167,030
8000 Revenue from Federal Sources					2,379,630
Total Revenues		\$216,778	\$168,176		\$331,399,020
Expenditures					
1000 Instruction					179,969,022
2000 Support Services		3,341,182			95,026,196
3000 Operation of Non-Instructional Services					7,774,381
4000 Facilities Acquisition, Construction and Improvement Services		12,264,825			12,264,825
5110 Debt Service					16,068,194
5130 Refund of Prior Year Revenues / Receipts					
Total Expenditures		\$15,606,007			\$311,102,618
Excess (Deficiency) Of Revenues Over Expenditures		(\$15,389,229)	\$168,176		\$20,296,402
Other Financing Sources (Uses)					
9110 Face Value of Bonds Issued					
9120 Proceeds from Refunding of Bonds					
9130 Bond Premiums					
9200 Proceeds from Extended-Term Financing					
9300 Interfund Transfers - IN		28,646,000			28,646,000
9400 Sale of or Compensation for Loss of Fixed Assets		23,750			33,287
9710 Transfers from Component Units					
9720 Transfers from Primary Governments					
9910 Other Financing Sources Not Listed in the 9000 Series					
9990 Insurance Recoveries					
5120 Debt Service – Refunded Bonds					
5150 Bond Discounts					
5200 Interfund Transfers – Out					28,646,000
5300 Transfers Out to Component Units/Primary Governments					
Total Other Financing Sources (Uses)		\$28,669,750			\$33,287

Amounts Expressed in Whole Dollars	<u>General Fund</u> <u>(10)</u>	<u>Public Purpose Trust</u> <u>(27)</u>	<u>Other Compt Approved</u> <u>(28)</u>	<u>Athletic / Activity</u> <u>(29)</u>	<u>Capital Reserve</u> <u>(690.</u> <u>1850)</u> <u>(31)</u>
Special And Extraordinary Items					
9920 Special Items – Gains					
9930 Extraordinary Items – Gains					
5520 Special Items – Losses					
5530 Extraordinary Items – Losses					
Net Change In Fund Balances	\$6,880,992				
Fund Balance					
0001 Fund Balance - Beginning of Fiscal Year	35,023,118				
Fund Balance - End Of Year	\$41,904,110				

Amounts Expressed in Whole Dollars	<u>Capital Reserve (1431)</u> <u>(32)</u>	<u>Other Capital Projects</u> <u>Fund</u> <u>(39)</u>	<u>Debt Service</u> <u>(40)</u>	<u>Permanent</u> <u>(90)</u>	<u>Total Governmental</u> <u>Funds</u>
Special And Extraordinary Items					
9920 Special Items – Gains					
9930 Extraordinary Items – Gains					
5520 Special Items – Losses					
5530 Extraordinary Items – Losses					
Net Change In Fund Balances		\$13,280,521	\$168,176		\$20,329,689
Fund Balance					
0001 Fund Balance - Beginning of Fiscal Year		15,268,165	19,655,650		69,946,933
Fund Balance - End Of Year		\$28,548,686	\$19,823,826		\$90,276,622

Amounts Expressed in Whole Dollars	<u>Food Service</u> <u>(51)</u>	<u>Child Care</u> <u>Operations</u> <u>(52)</u>	<u>Other Enterprise</u> <u>(58)</u>	<u>TOTAL</u>	<u>Internal Service</u> <u>(60)</u>
Assets And Deferred Outflows Of Resources					
Current Assets					
0100 Cash and Cash Equivalents	269,233			269,233	
0110 Investments	13,273			13,273	
0130 Due From Other Funds					
0141 Due From Other Governments					
0142 State Revenue Receivable	14,286			14,286	
0143 Federal Revenue Receivable	130,499			130,499	
0146 Due from Primary Government					
0147 Due from Component Unit					
0150 Other Receivables	67,113			67,113	
0170 Inventories	113,307			113,307	
0180 Prepaid Expenses (Expenditures)					
0190 Other Current Assets					
Total Current Assets	\$607,711			\$607,711	
Noncurrent Assets					
0211 Land					
0212 Site Improvements (Net)					
0220 Buildings and Building Improvements (Net)					
0230 Machinery, Equipment and Furniture (Net)	799,304			799,304	
0250 Construction in Progress					
0260 Long Term Prepayments					
0290 Other Noncurrent Assets					
Total Noncurrent Assets	\$799,304			\$799,304	
0910 Deferred Outflows of Resources					
Total Assets And Deferred Outflows Of Resources	\$1,407,015			\$1,407,015	

Amounts Expressed in Whole Dollars	<u>Food Service</u> <u>(51)</u>	<u>Child Care</u> <u>Operations</u> <u>(52)</u>	<u>Other Enterprise</u> <u>(58)</u>	<u>TOTAL</u>	<u>Internal Service</u> <u>(60)</u>
Liabilities And Deferred Inflows Of Resources And Net Position					
Current Liabilities					
0400 Due to Other Funds	9,919			9,919	
0411 Due to Other Governments					
0413 Due to Component Unit					
0420 Accounts Payable	254,726			254,726	
0430 Contracts Payable					
0440 Current Portion of Long-Term Debt					
0450 Short-Term Payables					
0461 Accrued Salaries and Benefits					
0462 Payroll Deductions and Withholding					
0480 Unearned Revenues	251,095			251,095	
0490 Other Current Liabilities					
Total Current Liabilities	\$515,740			\$515,740	
Noncurrent Liabilities					
0510 Bonds Payable					
0520 Extended-Term Financing Agreements Payable					
0530 Lease-Purchase Obligations					
0540 Accumulated Compensated Absences					
0550 Authority Lease Obligations					
0560 Other Post-Employment Benefits (OPEB)					
0570 Net Pension Liability					
0599 Other Noncurrent Liabilities					
Total Noncurrent Liabilities					
Total Liabilities	\$515,740			\$515,740	
0950 Deferred Inflows of Resources					
Net Position					
0791 Net Investment in Capital Assets	891,275			891,275	
0008 Restricted Net Position (0792 – 0798)					
0799 Unrestricted Net Position					
Total Net Position	\$891,275			\$891,275	
Total Liabilities And Deferred Inflows Of Resources And Net Position	\$1,407,015			\$1,407,015	

Amounts Expressed in Whole Dollars	<u>Food Service</u> <u>(51)</u>	<u>Child Care Operations</u> <u>(52)</u>	<u>Other Enterprise</u> <u>(58)</u>	<u>TOTAL</u>	<u>Internal Service</u> <u>(60)</u>
Operating Revenues					
6600 Food Service Revenue	3,743,198			3,743,198	
0071 Charges for Services					
0072 Other Operating Revenue					
Total Operating Revenues	\$3,743,198			\$3,743,198	
Operating Expenses					
100 Personnel Services – Salaries					
200 Personnel Services – Employee Benefits					
300 Purchased Professional and Technical Services	32,299			32,299	
400 Purchased Property Services	505,314			505,314	
500 Other Purchased Services	4,194,169			4,194,169	
600 Supplies	48,665			48,665	
740 Depreciation	191,779			191,779	
810 Dues and Fees	13,641			13,641	
890 Miscellaneous Expenditures	16,421			16,421	
Total Operating Expenses	\$5,002,288			\$5,002,288	
Operating Income (Loss)	(\$1,259,090)			(\$1,259,090)	
Non Operating Revenues (Expenses)					
6500 Earnings on Investments	3,555			3,555	
6920 Contributions and Donations from Private Sources					
6930 Gains or Losses on Sale of Fixed Assets					
6991 Refunds of a Prior Year Expenditure					
7000 Revenue from State Sources	82,942			82,942	
8000 Revenue from Federal Sources	1,072,575			1,072,575	
820 Claims and Judgments Against the LEA					
830 Interest					
TOTAL Non Operating Revenues (Expenses)	\$1,159,072			\$1,159,072	
Income (Loss) Before Contributions And Transfers	(\$100,018)			(\$100,018)	

Amounts Expressed in Whole Dollars	<u>Food Service</u> <u>(51)</u>	<u>Child Care Operations</u> <u>(52)</u>	<u>Other Enterprise</u> <u>(58)</u>	<u>TOTAL</u>	<u>Internal Service</u> <u>(60)</u>
Contributions, Transfers, and Special and Extraordinary Items					
5200 Interfund Transfers – Out					
5300 Transfers Out to Component Units/Primary Governments					
5520 Special Items – Losses					
5530 Extraordinary Items – Losses					
9300 Interfund Transfers - IN					
9500 Capital Contributions					
9700 Transfers IN From Component Units/Primary Governments					
9920 Special Items – Gains					
9930 Extraordinary Items – Gains					
Change In Net Position	(\$100,018)			(\$100,018)	
0002 Net Position - Beginning of Fiscal Year	991,293			991,293	
0003 Accounting Changes / Residual Equity Transfers					
Net Position - End Of Year	\$891,275			\$891,275	

Amounts Expressed in Whole Dollars	<u>Food Service</u> <u>(51)</u>	<u>Child Care Operations</u> <u>(52)</u>	<u>Other Enterprise</u> <u>(58)</u>	<u>TOTAL</u>	<u>Internal Service(60)</u>
Cash Flows From Operating Activities					
0011 Cash Receipts From Users	3,645,678			3,645,678	
0012 Cash Receipts From Assessments Made to Other Funds					
0013 Cash Receipts From Earnings on Investments					
0014 Cash Receipts From Other Operating Revenue					
0015 Cash Payments To Employees For Services					
0016 Cash Payments For Insurance Claims					
0017 Cash Payments To Suppliers For Goods and Services	5,002,288			5,002,288	
0018 Cash Payments For Other Operating Expenses					
Net Cash Provided By (Used For) Operating Activities	(\$1,356,610)			(\$1,356,610)	
Cash Flows From Non-Capital Financing Activities					
0021 Receipts From Local Sources - 6000					
0022 Receipts From State Sources - 7000	82,942			82,942	
0023 Receipts From Federal Sources -8000	1,075,575			1,075,575	
0024 Notes and Loans Received (Repaid)					
0025 Interest Paid on Notes/Loans - 5100-830					
0026 Operating Transfers In (Out)/Residual Equity Trans					
0027 Operating Transfers In (Out) Primary Government / Comp Unit					
0028 Receipts From Refund of Prior Year Expenditures - 6991					
0029 Special and Extraordinary Gains (losses)					
Net Cash Prov By (Used for) Non-Capital Financing Activities	\$1,158,517			\$1,158,517	
Cash Flows From Capital and Related Financing Activities					
0031 Payments For Fac Acq, Const, and Imp - 4000					
0032 Gain / (Loss) on Sale of Fixed Assets - 6930					
0033 Proceeds From Extended Term Financing - 9200					
0034 Principal Paid on Financing Agreements					
0035 Interest Paid on Financing Agreements - 5100-830					
0036 (Inc) Dec in Contributed Capital					
Net Cash Prov By (Used for) Capital and Related Financing Activities					
Cash Flows From Investing Activities					
0041 Earnings on Investments - 6500	3,555			3,555	
0042 Purchase of Inv Securities / Deposits to Inv Pools					
0043 Receipts From Investment Pool Withdrawals					
0044 Proceeds from Sale and Maturity of Inv Securities					
0045 Loans Received (Paid)					
Net Cash Prov By (Used for) Investing Activities	\$3,555			\$3,555	

	<u>Food Service</u> <u>(51)</u>	<u>Child Care Operations</u> <u>(52)</u>	<u>Other Enterprise</u> <u>(58)</u>	<u>TOTAL</u>	<u>Internal Service</u> <u>(60)</u>
Net Increase (Decrease) in Cash Flows	(194,538)			(194,538)	
0004 Cash and Cash Equivalents Beginning of Year	463,771			463,771	
Cash and Cash Equivalents at Year End	\$269,233			\$269,233	

Reconciliation of Operating Income (Loss) To Net Cash Provided by (Used For) Operating Activities

0005 Operating Income (Loss) per REP	(1,259,090)			(1,259,090)	
Adjustments					
0051 Depreciation and Net Amortization					
0052 Provision for Uncollectible Accounts					
0053 Other Adjustments					
Effect of Changes in Assets, Liabilities, Deferred Outflows and Deferred Inflows					
0054 (Inc) Dec In Accounts Receivable (0120-0150)					
0055 Advances to Other Funds (0160)					
0056 (Inc) Dec in Inventories (0170)	(97,520)			(97,520)	
0057 (Inc) Dec in Prepaid Expenses (0180)					
0058 (Inc) Dec in Other Current or Noncurrent Assets					
0064 Deferred Outflows (0910)					
0059 Inc (Dec) in Accounts Payable (0400-0450)					
0060 Inc (Dec) in Accrued Salaries/Benefits (0461)					
0065 Inc (Dec) in Net Pension Liabilities (0570)					
0066 Inc (Dec) in Other Postemp Benefit Oblig (0560)					
0061 Inc (Dec) in Payroll Deductions/Withholding (0462)					
0062 Inc (Dec) in Unearned Revenue (0480)					
0063 Inc (Dec) in Other Current or Noncurrent Liabilities					
0067 Deferred Inflows (0950)					
Total Adjustments	(\$97,520)			(\$97,520)	
Cash Provided By (Used for) Total	(\$1,356,610)			(\$1,356,610)	

COMBINED STATEMENT OF CASH FLOWS
SCHEDULE OF NONCASH INVESTING, CAPITAL, AND FINANCING ACTIVITIES

Explanation of Transaction and Balance Sheet Effect	Amount
Total	

LEA : 122092102 Central Bucks SD

Printed 1/17/2018 8:31:05 AM

Amounts Expressed in Whole Dollars

Private Purpose Trust
(71)

Investment Trust
(72)

Pension Trust
(73)

Activity
(81)

Assets And Deferred Outflows Of Resources

Assets

- 0100 Cash and Cash Equivalents
- 0110 Investments
- 0130 Due From Other Funds
- 0147 Due from Component Unit
- 0150 Other Receivables
- 0170 Inventories
- 0180 Prepaid Expenses (Expenditures)
- 0190 Other Current Assets
- 0220 Buildings and Building Improvements (Net)
- 0230 Machinery, Equipment and Furniture (Net)

Total Assets

0910 Deferred Outflows of Resources

Total Assets And Deferred Outflows Of Resources

LEA : 122092102 Central Bucks SD

Printed 1/17/2018 8:31:05 AM

Amounts Expressed in Whole Dollars

	<u>Other Agency</u> <u>(89)</u>	<u>Discrete Component Units</u> <u>(98)</u>	<u>Discrete Component Units</u> <u>(99)</u>	<u>Total Fiduciary Funds</u>
Assets And Deferred Outflows Of Resources				
Assets				
0100 Cash and Cash Equivalents		71,968		71,968
0110 Investments		1,412,736		1,412,736
0130 Due From Other Funds				
0147 Due from Component Unit				
0150 Other Receivables				
0170 Inventories				
0180 Prepaid Expenses (Expenditures)				
0190 Other Current Assets				
0220 Buildings and Building Improvements (Net)				
0230 Machinery, Equipment and Furniture (Net)				
Total Assets		\$1,484,704		\$1,484,704
0910 Deferred Outflows of Resources				
Total Assets And Deferred Outflows Of Resources		\$1,484,704		\$1,484,704

LEA : 122092102 Central Bucks SD

Printed 1/17/2018 8:31:05 AM

Amounts Expressed in Whole Dollars	<u>Private Purpose Trust</u> (71)	<u>Investment Trust</u> (72)	<u>Pension Trust</u> (73)	<u>Activity</u> (81)
Liabilities, Deferred Inflows Of Resources And Net Position				
Liabilities				
0400 Due to Other Funds				
0411 Due to Other Governments				
0412 Due to Primary Government				
0413 Due to Component Unit				
0420 Accounts Payable				
0430 Contracts Payable				
0450 Short-Term Payables				
0461 Accrued Salaries and Benefits				
0462 Payroll Deductions and Withholding				
0480 Unearned Revenues				
0490 Other Current Liabilities				
Total Liabilities				
0950 Deferred Inflows of Resources				
Net Position				
0791 Net Investment in Capital Assets				
0009 Restricted Net Position (0792 – 0798)				
0799 Unrestricted Net Position				
Total Net Position				
Total Liabilities, Deferred Inflows Of Resources And Net Position				

LEA : 122092102 Central Bucks SD

Printed 1/17/2018 8:31:05 AM

Amounts Expressed in Whole Dollars

<u>Other Agency</u>	<u>Discrete Component Units</u>	<u>Discrete Component Units</u>	<u>Total Fiduciary Funds</u>
(89)	(98)	(99)	

Liabilities, Deferred Inflows Of Resources And Net Position

Liabilities

0400 Due to Other Funds			
0411 Due to Other Governments			
0412 Due to Primary Government			
0413 Due to Component Unit			
0420 Accounts Payable			
0430 Contracts Payable			
0450 Short-Term Payables			
0461 Accrued Salaries and Benefits			
0462 Payroll Deductions and Withholding			
0480 Unearned Revenues			
0490 Other Current Liabilities	1,484,704		1,484,704
Total Liabilities	\$1,484,704		\$1,484,704

0950 Deferred Inflows of Resources

Net Position

0791 Net Investment in Capital Assets			
0009 Restricted Net Position (0792 – 0798)			
0799 Unrestricted Net Position			
Total Net Position			
Total Liabilities, Deferred Inflows Of Resources And Net Position	\$1,484,704		\$1,484,704

	<u>Revenue Reported In Current Year</u>	<u>Current Year Tax Accrual</u>	<u>Prior Year Tax Accrual</u>	<u>Taxes Collected In Current Year</u>
<u>Revenue from Local Sources</u>				
6111 Current Real Estate Taxes	213,127,211.20	181,557.00	237,869.00	213,183,523.20
6112 Interim Real Estate Taxes	1,876,806.05			1,876,806.05
6113 Public Utility Realty Taxes	269,762.12			269,762.12
6151 Current Act 511 Earned Income Taxes	24,790,985.83	335,154.00	303,668.00	24,759,499.83
6153 Current Act 511 Real Estate Transfer Taxes	4,681,252.14	597,846.00	1,054,270.00	5,137,676.14
6411 Delinquent Real Estate Taxes	2,422,169.83	142,027.00	306,392.00	2,586,534.83
6451 Delinquent Act 511 Earned Income Taxes	1,058,545.18			1,058,545.18
6500 Earnings on Investments	683,123.52			
6700 Revenues from LEA Activities	349,837.66			
6821 State Revenue Received from Other Pennsylvania Public LEAs	7,119.00			
6832 Federal IDEA Revenue Received as Pass Through	2,480,756.01			
6910 Rentals	43,977.68			
6920 Contributions and Donations from Private Sources	529,170.47			
6941 Regular Day School Tuition	70,877.31			
6944 Receipts from Other LEAs in Pennsylvania - Education	342,573.60			
6980 Revenue from Community Services Activities	3,696,471.63			
6991 Refunds of a Prior Year Expenditure	36,766.64			
TOTAL Revenue from Local Sources	\$256,467,405.87	\$1,256,584.00	\$1,902,199.00	\$248,872,347.35

**Revenue Reported
In Current Year**

Revenue from State Sources

7110 Basic Education Funding	17,700,577.52		
7160 Tuition for Orphans Subsidy	156,243.48		
7271 Special Education funds for School-Aged Pupils	7,285,710.78		
7299 Program Revenues Not Listed Previously in the 7200 Series	2,395.29		
7311 Pupil Transportation Subsidy	2,785,135.95		
7312 Nonpublic and Charter School Pupil Transportation Subsidy	657,965.00		
7320 Rental and Sinking Fund Payments / Building Reimbursement Subsidy	7,288,893.68		
7330 Health Services (Medical, Dental, Nurse, Act 25)	364,290.08		
7340 State Property Tax Reduction Allocation	6,042,073.97		
7505 Ready to Learn Block Grant	1,228,276.00		
7599 Other State Revenue Not Listed Elsewhere in the 7000 Series	96,141.28		
7810 State Share of Social Security and Medicare Taxes	5,804,650.87		
7820 State Share of Retirement Contributions	22,754,675.79		
TOTAL Revenue from State Sources	\$72,167,029.69		

**Revenue Reported
In Current Year**

Revenue from Federal Sources

8514 NCLB, Title I - Improving the Academic Achievement of the Disadvantaged	617,884.00			
8515 NCLB, Title II - Preparing, Training and Recruiting High Quality Teachers and Principals	274,340.00			
8516 NCLB, Title III - Language Instruction for Limited English Proficient and Immigrant Students	59,653.00			
8810 School-Based Access Medicaid Reimbursement Program (SBAP) Reimbursements (Access)	1,400,719.76			
8820 Medical Assistance Reimbursement for Administrative Claiming (Quarterly) Program	27,033.07			
TOTAL Revenue from Federal Sources	\$2,379,629.83			

Revenue Reported
In Current Year

Other Financing Sources

9400 Sale of or Compensation for Loss of Fixed Assets	9,536.96			
TOTAL Other Financing Sources	\$9,536.96			
TOTAL FROM ALL SOURCES	\$331,023,602.35	\$1,256,584.00	\$1,902,199.00	\$248,872,347.35

Revenue from Local Sources	256,467,405.87
Revenue from State Sources	72,167,029.69
Revenue from Federal Sources	2,379,629.83
Other Financing Sources	9,536.96
TOTAL FROM ALL SOURCES	\$331,023,602.35

General Fund (10)

	<u>Total</u>
1000 Instruction	
100 Personnel Services – Salaries	
100 Personnel Services – Salaries	105,451,095.81
Total Personnel Services – Salaries	\$105,451,095.81
200 Personnel Services – Employee Benefits	
210 Group Insurance – Contracted Provider	150,106.52
220 Social Security Contributions	7,810,748.82
230 PSERS Retirement Contributions	31,738,373.25
250 Unemployment Compensation	26,570.08
260 Workers’ Compensation	984,001.49
270 Group Insurance – Self-Insurance	18,210,000.93
299 All Other Employee Benefits	19,122.14
Total Personnel Services – Employee Benefits	\$58,938,923.23
300 Purchased Professional and Technical Services	
322 Professional Educational Services – Ius	816,869.12
329 Professional Educational Services – Other	628,670.83
330 Other Professional Services	1,312,241.31
Total Purchased Professional and Technical Services	\$2,757,781.26
400 Purchased Property Services	
430 Repairs and Maintenance Services	194,898.32
440 Rentals	472,711.62
Total Purchased Property Services	\$667,609.94
500 Other Purchased Services	
530 Communications	2,000.00
550 Printing and Binding	917.50
562 Tuition To Pennsylvania Charter Schools	1,383,453.48
564 Tuition To Career and Technology Centers	4,351,610.77
567 Tuition To Approved Private Schools (APS) and PA Chartered Schools for the Deaf and Blind	284,697.52
568 Tuition To Private Residential Rehabilitative Institutions (PRRI) [In-State] and Detention Centers	1,199,992.95
569 Tuition – Other	2,206,201.59
580 Travel	63,580.77
592 Services Purchased From Another LEA Within the State	4,153.00
594 IU Payment By Withholding for Institutionalized Children’s Programs – Special Classes	2,472.44
Total Other Purchased Services	\$9,499,080.02
600 Supplies	
610 General Supplies	1,645,835.53
620 Energy	185,971.59
630 Food	48.08
640 Books and Periodicals	409,297.89
650 Supplies & Fees – Technology Related	368,466.54
Total Supplies	\$2,609,619.63
700 Property	
752 Capital Equipment – Original and Additional	39,381.70
Total Property	\$39,381.70

General Fund (10)

1000 Instruction	<u>Total</u>
800 <u>Other Objects</u>	
810 Dues and Fees	5,530.03
Total Other Objects	\$5,530.03
Total 1000 Instruction	\$179,969,021.62

General Fund (10)

1100 Regular Programs – Elementary / Secondary

	<u>Elementary</u>	<u>Secondary</u>	<u>Federal</u>	<u>Total</u>
100 Personnel Services – Salaries				
100 Personnel Services – Salaries	41,695,306.24	40,513,450.75	607,201.32	82,815,958.31
Total Personnel Services – Salaries	\$41,695,306.24	\$40,513,450.75	\$607,201.32	\$82,815,958.31
200 Personnel Services – Employee Benefits				
210 Group Insurance – Contracted Provider	58,616.88	56,955.46		115,572.34
220 Social Security Contributions	3,100,993.21	3,026,766.38	45,292.72	6,173,052.31
230 PSERS Retirement Contributions	12,558,157.79	12,347,845.90	170,274.86	25,076,278.55
250 Unemployment Compensation	9,943.98	8,425.91	606.70	18,976.59
260 Workers' Compensation	357,587.72	308,167.99	20,584.91	686,340.62
270 Group Insurance – Self-Insurance	6,370,096.74	6,068,608.71	37,121.16	12,475,826.61
299 All Other Employee Benefits	6,355.76	6,885.40		13,241.16
Total Personnel Services – Employee Benefits	\$22,461,752.08	\$21,823,655.75	\$273,880.35	\$44,559,288.18
300 Purchased Professional and Technical Services				
329 Professional Educational Services – Other	9,145.00	21,096.50		30,241.50
Total Purchased Professional and Technical Services	\$9,145.00	\$21,096.50		\$30,241.50
400 Purchased Property Services				
430 Repairs and Maintenance Services	98,548.50	93,502.24		192,050.74
440 Rentals	233,778.10	236,933.52		470,711.62
Total Purchased Property Services	\$332,326.60	\$330,435.76		\$662,762.36
500 Other Purchased Services				
530 Communications		2,000.00		2,000.00
550 Printing and Binding		917.50		917.50
562 Tuition To Pennsylvania Charter Schools	126,293.10	837,650.17		963,943.27
568 Tuition To Private Residential Rehabilitative Institutions (PRRI) [In-State] and Detention Centers	5,828.42	6,314.12		12,142.54
580 Travel	11,208.64	14,914.21		26,122.85
Total Other Purchased Services	\$143,330.16	\$861,796.00		\$1,005,126.16
600 Supplies				
610 General Supplies	616,725.66	875,458.94	2,144.54	1,494,329.14
620 Energy	68,169.49	107,506.13		175,675.62
630 Food	48.08			48.08
640 Books and Periodicals	207,542.88	56,772.06		264,314.94
650 Supplies & Fees – Technology Related	296,990.39	22,926.15		319,916.54
Total Supplies	\$1,189,476.50	\$1,062,663.28	\$2,144.54	\$2,254,284.32
700 Property				
752 Capital Equipment – Original and Additional	39,381.70			39,381.70
Total Property	\$39,381.70			\$39,381.70
800 Other Objects				
810 Dues and Fees	79.00	3,477.03		3,556.03
Total Other Objects	\$79.00	\$3,477.03		\$3,556.03
Total 1100 Regular Programs – Elementary / Secondary	\$65,870,797.28	\$64,616,575.07	\$883,226.21	\$131,370,598.56

LEA : 122092102 Central Bucks SD

Printed 1/17/2018 8:31:08 AM

Page - 4 of 23

General Fund (10)**1110 Regular Programs**

	<u>Elementary</u>	<u>Secondary</u>	<u>Federal</u>	<u>Total</u>
100 Personnel Services – Salaries				
100 Personnel Services – Salaries	41,695,306.24	40,513,450.75		82,208,756.99
Total Personnel Services – Salaries	\$41,695,306.24	\$40,513,450.75		\$82,208,756.99
200 Personnel Services – Employee Benefits				
210 Group Insurance – Contracted Provider	58,616.88	56,955.46		115,572.34
220 Social Security Contributions	3,100,993.21	3,026,766.38		6,127,759.59
230 PSERS Retirement Contributions	12,558,157.79	12,347,845.90		24,906,003.69
250 Unemployment Compensation	9,943.98	8,425.91		18,369.89
260 Workers' Compensation	357,587.72	308,167.99		665,755.71
270 Group Insurance – Self-Insurance	6,370,096.74	6,068,608.71		12,438,705.45
299 All Other Employee Benefits	6,355.76	6,885.40		13,241.16
Total Personnel Services – Employee Benefits	\$22,461,752.08	\$21,823,655.75		\$44,285,407.83
300 Purchased Professional and Technical Services				
329 Professional Educational Services – Other	9,145.00	21,096.50		30,241.50
Total Purchased Professional and Technical Services	\$9,145.00	\$21,096.50		\$30,241.50
400 Purchased Property Services				
430 Repairs and Maintenance Services	98,548.50	93,502.24		192,050.74
440 Rentals	233,778.10	236,933.52		470,711.62
Total Purchased Property Services	\$332,326.60	\$330,435.76		\$662,762.36
500 Other Purchased Services				
530 Communications		2,000.00		2,000.00
550 Printing and Binding		917.50		917.50
562 Tuition To Pennsylvania Charter Schools	126,293.10	837,650.17		963,943.27
568 Tuition To Private Residential Rehabilitative Institutions (PRRI) [In-State] and Detention Centers	5,828.42	6,314.12		12,142.54
580 Travel	11,208.64	14,914.21		26,122.85
Total Other Purchased Services	\$143,330.16	\$861,796.00		\$1,005,126.16
600 Supplies				
610 General Supplies	616,725.66	875,458.94		1,492,184.60
620 Energy	68,169.49	107,506.13		175,675.62
630 Food	48.08			48.08
640 Books and Periodicals	207,542.88	56,772.06		264,314.94
650 Supplies & Fees – Technology Related	296,990.39	22,926.15		319,916.54
Total Supplies	\$1,189,476.50	\$1,062,663.28		\$2,252,139.78
700 Property				
752 Capital Equipment – Original and Additional	39,381.70			39,381.70
Total Property	\$39,381.70			\$39,381.70
800 Other Objects				
810 Dues and Fees	79.00	3,477.03		3,556.03
Total Other Objects	\$79.00	\$3,477.03		\$3,556.03
Total 1110 Regular Programs	\$65,870,797.28	\$64,616,575.07		\$130,487,372.35

General Fund (10)

	<u>Elementary</u>	<u>Secondary</u>	<u>Federal</u>	<u>Total</u>
1190 Federally-Funded Regular Programs				
100 Personnel Services – Salaries				
100 Personnel Services – Salaries			607,201.32	607,201.32
Total Personnel Services – Salaries			\$607,201.32	\$607,201.32
200 Personnel Services – Employee Benefits				
220 Social Security Contributions			45,292.72	45,292.72
230 PSERS Retirement Contributions			170,274.86	170,274.86
250 Unemployment Compensation			606.70	606.70
260 Workers' Compensation			20,584.91	20,584.91
270 Group Insurance – Self-Insurance			37,121.16	37,121.16
Total Personnel Services – Employee Benefits			\$273,880.35	\$273,880.35
600 Supplies				
610 General Supplies			2,144.54	2,144.54
Total Supplies			\$2,144.54	\$2,144.54
Total 1190 Federally-Funded Regular Programs			\$883,226.21	\$883,226.21

General Fund (10)

1200 Special Programs – Elementary / Secondary

	<u>Elementary</u>	<u>Secondary</u>	<u>Federal</u>	<u>Total</u>
100 Personnel Services – Salaries				
100 Personnel Services – Salaries	10,754,273.75	9,493,709.93	1,713,681.72	21,961,665.40
Total Personnel Services – Salaries	\$10,754,273.75	\$9,493,709.93	\$1,713,681.72	\$21,961,665.40
200 Personnel Services – Employee Benefits				
210 Group Insurance – Contracted Provider	16,726.14	13,489.68	3,700.58	33,916.40
220 Social Security Contributions	775,628.71	684,706.62	127,010.44	1,587,345.77
230 PSERS Retirement Contributions	3,161,633.06	2,813,635.03	492,100.18	6,467,368.27
250 Unemployment Compensation	3,621.34	3,453.56	341.78	7,416.68
260 Workers' Compensation	146,206.47	130,138.92	15,110.61	291,456.00
270 Group Insurance – Self-Insurance	2,744,804.69	2,554,391.29	324,152.79	5,623,348.77
299 All Other Employee Benefits	2,822.87	3,058.11		5,880.98
Total Personnel Services – Employee Benefits	\$6,851,443.28	\$6,202,873.21	\$962,416.38	\$14,016,732.87
300 Purchased Professional and Technical Services				
322 Professional Educational Services – Ius	381,891.44	381,891.44	53,086.24	816,869.12
329 Professional Educational Services – Other			545,676.33	545,676.33
330 Other Professional Services	1,312,241.31			1,312,241.31
Total Purchased Professional and Technical Services	\$1,694,132.75	\$381,891.44	\$598,762.57	\$2,674,786.76
400 Purchased Property Services				
430 Repairs and Maintenance Services	2,847.58			2,847.58
440 Rentals	2,000.00			2,000.00
Total Purchased Property Services	\$4,847.58			\$4,847.58
500 Other Purchased Services				
562 Tuition To Pennsylvania Charter Schools	49,961.25	369,548.96		419,510.21
567 Tuition To Approved Private Schools (APS) and PA Chartered Schools for the Deaf and Blind	136,654.81	148,042.71		284,697.52
568 Tuition To Private Residential Rehabilitative Institutions (PRRI) [In-State] and Detention Centers		23,757.00	1,164,093.41	1,187,850.41
580 Travel	20,516.17	7,455.86	830.04	28,802.07
594 IU Payment By Withholding for Institutionalized Children’s Programs – Special Classes	1,186.77	1,285.67		2,472.44
Total Other Purchased Services	\$208,319.00	\$550,090.20	\$1,164,923.45	\$1,923,332.65
600 Supplies				
610 General Supplies	54,129.01	36,439.77	47,475.36	138,044.14
620 Energy	4,890.20	5,405.77		10,295.97
640 Books and Periodicals	39,419.86	34,026.51		73,446.37
650 Supplies & Fees – Technology Related			48,550.00	48,550.00
Total Supplies	\$98,439.07	\$75,872.05	\$96,025.36	\$270,336.48
800 Other Objects				
810 Dues and Fees	1,974.00			1,974.00
Total Other Objects	\$1,974.00			\$1,974.00
Total 1200 Special Programs – Elementary / Secondary	\$19,613,429.43	\$16,704,436.83	\$4,535,809.48	\$40,853,675.74

General Fund (10)

1210 Life Skills Support

100 Personnel Services – Salaries

	<u>Elementary</u>	<u>Secondary</u>	<u>Federal</u>	<u>Total</u>
100 Personnel Services – Salaries	160,994.21	172,297.38		333,291.59
Total Personnel Services – Salaries	\$160,994.21	\$172,297.38		\$333,291.59

200 Personnel Services – Employee Benefits

220 Social Security Contributions	11,408.91	12,344.10		23,753.01
230 PSERS Retirement Contributions	48,001.19	49,596.41		97,597.60
250 Unemployment Compensation	148.20	102.51		250.71
260 Workers' Compensation	4,479.00	3,568.00		8,047.00
270 Group Insurance – Self-Insurance	83,125.68	68,075.85		151,201.53
Total Personnel Services – Employee Benefits	\$147,162.98	\$133,686.87		\$280,849.85

600 Supplies

610 General Supplies	3,752.13	4,879.96		8,632.09
Total Supplies	\$3,752.13	\$4,879.96		\$8,632.09

Total 1210 Life Skills Support	\$311,909.32	\$310,864.21		\$622,773.53
---------------------------------------	---------------------	---------------------	--	---------------------

General Fund (10)

1220 Sensory Support

	<u>Elementary</u>	<u>Secondary</u>	<u>Federal</u>	<u>Total</u>
100 Personnel Services – Salaries				
100 Personnel Services – Salaries	83,621.81	106,711.26		190,333.07
Total Personnel Services – Salaries	\$83,621.81	\$106,711.26		\$190,333.07
200 Personnel Services – Employee Benefits				
220 Social Security Contributions	5,996.64	7,812.23		13,808.87
230 PSERS Retirement Contributions	25,111.68	32,045.32		57,157.00
250 Unemployment Compensation	15.21	15.21		30.42
260 Workers' Compensation	513.50	513.50		1,027.00
270 Group Insurance – Self-Insurance	14,332.50	14,332.50		28,665.00
Total Personnel Services – Employee Benefits	\$45,969.53	\$54,718.76		\$100,688.29
500 Other Purchased Services				
580 Travel		694.95		694.95
Total Other Purchased Services		\$694.95		\$694.95
600 Supplies				
610 General Supplies	12,184.43			12,184.43
Total Supplies	\$12,184.43			\$12,184.43
Total 1220 Sensory Support	\$141,775.77	\$162,124.97		\$303,900.74

General Fund (10)

1230 Emotional Support

	<u>Elementary</u>	<u>Secondary</u>	<u>Federal</u>	<u>Total</u>
100 Personnel Services – Salaries				
100 Personnel Services – Salaries	1,461,188.38	1,024,955.16		2,486,143.54
Total Personnel Services – Salaries	\$1,461,188.38	\$1,024,955.16		\$2,486,143.54
200 Personnel Services – Employee Benefits				
220 Social Security Contributions	106,157.75	74,643.36		180,801.11
230 PSERS Retirement Contributions	429,722.96	307,765.26		737,488.22
250 Unemployment Compensation	761.64	396.00		1,157.64
260 Workers' Compensation	25,884.39	13,128.70		39,013.09
270 Group Insurance – Self-Insurance	483,388.77	282,543.17		765,931.94
Total Personnel Services – Employee Benefits	\$1,045,915.51	\$678,476.49		\$1,724,392.00
600 Supplies				
610 General Supplies	24,312.48	4,910.03		29,222.51
640 Books and Periodicals	3,656.70	1,107.37		4,764.07
Total Supplies	\$27,969.18	\$6,017.40		\$33,986.58
Total 1230 Emotional Support	\$2,535,073.07	\$1,709,449.05		\$4,244,522.12

General Fund (10)

1240 Academic Support

	<u>Elementary</u>	<u>Secondary</u>	<u>Federal</u>	<u>Total</u>
100 Personnel Services – Salaries				
100 Personnel Services – Salaries	7,380,953.40	6,300,502.34	1,713,681.72	15,395,137.46
Total Personnel Services – Salaries	\$7,380,953.40	\$6,300,502.34	\$1,713,681.72	\$15,395,137.46
200 Personnel Services – Employee Benefits				
210 Group Insurance – Contracted Provider	16,726.14	13,489.68	3,700.58	33,916.40
220 Social Security Contributions	532,470.29	453,542.56	127,010.44	1,113,023.29
230 PSERS Retirement Contributions	2,170,457.56	1,861,105.65	492,100.18	4,523,663.39
250 Unemployment Compensation	1,294.56	1,267.87	341.78	2,904.21
260 Workers' Compensation	65,559.51	56,610.13	15,110.61	137,280.25
270 Group Insurance – Self-Insurance	1,552,279.96	1,416,301.38	324,152.79	3,292,734.13
299 All Other Employee Benefits	2,822.87	3,058.11		5,880.98
Total Personnel Services – Employee Benefits	\$4,341,610.89	\$3,805,375.38	\$962,416.38	\$9,109,402.65
300 Purchased Professional and Technical Services				
322 Professional Educational Services – Ius	381,891.44	381,891.44	53,086.24	816,869.12
329 Professional Educational Services – Other			545,676.33	545,676.33
Total Purchased Professional and Technical Services	\$381,891.44	\$381,891.44	\$598,762.57	\$1,362,545.45
500 Other Purchased Services				
568 Tuition To Private Residential Rehabilitative Institutions (PRRI) [In-State] and Detention Centers		23,757.00	1,164,093.41	1,187,850.41
580 Travel		6,760.91	830.04	7,590.95
Total Other Purchased Services		\$30,517.91	\$1,164,923.45	\$1,195,441.36
600 Supplies				
610 General Supplies	8,728.70	23,330.62	47,475.36	79,534.68
640 Books and Periodicals	35,763.16	30,630.94		66,394.10
650 Supplies & Fees – Technology Related			48,550.00	48,550.00
Total Supplies	\$44,491.86	\$53,961.56	\$96,025.36	\$194,478.78
Total 1240 Academic Support	\$12,148,947.59	\$10,572,248.63	\$4,535,809.48	\$27,257,005.70

General Fund (10)

	<u>Elementary</u>	<u>Secondary</u>	<u>Federal</u>	<u>Total</u>
1241 Learning Support – Public				
100 Personnel Services – Salaries				
100 Personnel Services – Salaries	6,544,465.66	6,235,403.26	1,713,681.72	14,493,550.64
Total Personnel Services – Salaries	\$6,544,465.66	\$6,235,403.26	\$1,713,681.72	\$14,493,550.64
200 Personnel Services – Employee Benefits				
210 Group Insurance – Contracted Provider	13,877.16	13,260.40	3,700.58	30,838.14
220 Social Security Contributions	470,803.55	448,735.67	127,010.44	1,046,549.66
230 PSERS Retirement Contributions	1,919,411.21	1,841,505.34	492,100.18	4,253,016.73
250 Unemployment Compensation	1,147.70	1,251.16	341.78	2,740.64
260 Workers' Compensation	60,010.07	56,133.35	15,110.61	131,254.03
270 Group Insurance – Self-Insurance	1,417,090.39	1,405,305.24	324,152.79	3,146,548.42
299 All Other Employee Benefits	2,328.87	3,018.35		5,347.22
Total Personnel Services – Employee Benefits	\$3,884,668.95	\$3,769,209.51	\$962,416.38	\$8,616,294.84
300 Purchased Professional and Technical Services				
322 Professional Educational Services – Ius	381,891.44	381,891.44	53,086.24	816,869.12
329 Professional Educational Services – Other			545,676.33	545,676.33
Total Purchased Professional and Technical Services	\$381,891.44	\$381,891.44	\$598,762.57	\$1,362,545.45
500 Other Purchased Services				
568 Tuition To Private Residential Rehabilitative Institutions (PRRI) [In-State] and Detention Centers		23,757.00	1,164,093.41	1,187,850.41
580 Travel		6,760.91	830.04	7,590.95
Total Other Purchased Services		\$30,517.91	\$1,164,923.45	\$1,195,441.36
600 Supplies				
610 General Supplies	7,811.84	23,279.13	47,475.36	78,566.33
640 Books and Periodicals	35,763.16	30,630.94		66,394.10
650 Supplies & Fees – Technology Related			48,550.00	48,550.00
Total Supplies	\$43,575.00	\$53,910.07	\$96,025.36	\$193,510.43
Total 1241 Learning Support – Public	\$10,854,601.05	\$10,470,932.19	\$4,535,809.48	\$25,861,342.72

General Fund (10)

1243 Gifted Support

	<u>Elementary</u>	<u>Secondary</u>	<u>Federal</u>	<u>Total</u>
100 Personnel Services – Salaries				
100 Personnel Services – Salaries	836,487.74	65,099.08		901,586.82
Total Personnel Services – Salaries	\$836,487.74	\$65,099.08		\$901,586.82
200 Personnel Services – Employee Benefits				
210 Group Insurance – Contracted Provider	2,848.98	229.28		3,078.26
220 Social Security Contributions	61,666.74	4,806.89		66,473.63
230 PSERS Retirement Contributions	251,046.35	19,600.31		270,646.66
250 Unemployment Compensation	146.86	16.71		163.57
260 Workers' Compensation	5,549.44	476.78		6,026.22
270 Group Insurance – Self-Insurance	135,189.57	10,996.14		146,185.71
299 All Other Employee Benefits	494.00	39.76		533.76
Total Personnel Services – Employee Benefits	\$456,941.94	\$36,165.87		\$493,107.81
600 Supplies				
610 General Supplies	916.86	51.49		968.35
Total Supplies	\$916.86	\$51.49		\$968.35
Total 1243 Gifted Support	\$1,294,346.54	\$101,316.44		\$1,395,662.98

General Fund (10)

1270 Multi-Handicapped Support

100 Personnel Services – Salaries

	<u>Elementary</u>	<u>Secondary</u>	<u>Federal</u>	<u>Total</u>
100 Personnel Services – Salaries	158,495.01	55,918.33		214,413.34
Total Personnel Services – Salaries	\$158,495.01	\$55,918.33		\$214,413.34

200 Personnel Services – Employee Benefits

220 Social Security Contributions	11,204.99	3,988.55		15,193.54
230 PSERS Retirement Contributions	47,567.48	16,792.34		64,359.82
250 Unemployment Compensation	76.05	45.63		121.68
260 Workers' Compensation	2,567.50	1,540.50		4,108.00
270 Group Insurance – Self-Insurance	71,662.50	28,665.00		100,327.50
Total Personnel Services – Employee Benefits	\$133,078.52	\$51,032.02		\$184,110.54

600 Supplies

610 General Supplies	91.65	2,919.93		3,011.58
Total Supplies	\$91.65	\$2,919.93		\$3,011.58

Total 1270 Multi-Handicapped Support

	\$291,665.18	\$109,870.28		\$401,535.46
--	---------------------	---------------------	--	---------------------

General Fund (10)

	<u>Elementary</u>	<u>Secondary</u>	<u>Federal</u>	<u>Total</u>
1290 Special Programs - Other Support				
100 Personnel Services – Salaries				
100 Personnel Services – Salaries	1,509,020.94	1,833,325.46		3,342,346.40
Total Personnel Services – Salaries	\$1,509,020.94	\$1,833,325.46		\$3,342,346.40
200 Personnel Services – Employee Benefits				
220 Social Security Contributions	108,390.13	132,375.82		240,765.95
230 PSERS Retirement Contributions	440,772.19	546,330.05		987,102.24
250 Unemployment Compensation	1,325.68	1,626.34		2,952.02
260 Workers' Compensation	47,202.57	54,778.09		101,980.66
270 Group Insurance – Self-Insurance	540,015.28	744,473.39		1,284,488.67
Total Personnel Services – Employee Benefits	\$1,137,705.85	\$1,479,583.69		\$2,617,289.54
300 Purchased Professional and Technical Services				
330 Other Professional Services	1,312,241.31			1,312,241.31
Total Purchased Professional and Technical Services	\$1,312,241.31			\$1,312,241.31
400 Purchased Property Services				
430 Repairs and Maintenance Services	2,847.58			2,847.58
440 Rentals	2,000.00			2,000.00
Total Purchased Property Services	\$4,847.58			\$4,847.58
500 Other Purchased Services				
562 Tuition To Pennsylvania Charter Schools	49,961.25	369,548.96		419,510.21
567 Tuition To Approved Private Schools (APS) and PA Chartered Schools for the Deaf and Blind	136,654.81	148,042.71		284,697.52
580 Travel	20,516.17			20,516.17
594 IU Payment By Withholding for Institutionalized Children's Programs – Special Classes	1,186.77	1,285.67		2,472.44
Total Other Purchased Services	\$208,319.00	\$518,877.34		\$727,196.34
600 Supplies				
610 General Supplies	5,059.62	399.23		5,458.85
620 Energy	4,890.20	5,405.77		10,295.97
640 Books and Periodicals		2,288.20		2,288.20
Total Supplies	\$9,949.82	\$8,093.20		\$18,043.02
800 Other Objects				
810 Dues and Fees	1,974.00			1,974.00
Total Other Objects	\$1,974.00			\$1,974.00
Total 1290 Special Programs - Other Support	\$4,184,058.50	\$3,839,879.69		\$8,023,938.19

General Fund (10)

1300 Vocational Education

500 Other Purchased Services

564 Tuition To Career and Technology Centers

Total Other Purchased Services

Total 1300 Vocational Education

Elementary

Secondary

Federal

Total

4,351,610.77

4,351,610.77

\$4,351,610.77

\$4,351,610.77

\$4,351,610.77

\$4,351,610.77

General Fund (10)

	<u>Elementary</u>	<u>Secondary</u>	<u>Federal</u>	<u>Total</u>
1400 Other Instructional Programs – Elementary / Secondary				
100 Personnel Services – Salaries				
100 Personnel Services – Salaries	402,256.30	271,215.80		673,472.10
Total Personnel Services – Salaries	\$402,256.30	\$271,215.80		\$673,472.10
200 Personnel Services – Employee Benefits				
210 Group Insurance – Contracted Provider	296.53	321.25		617.78
220 Social Security Contributions	30,000.23	20,350.51		50,350.74
230 PSERS Retirement Contributions	120,935.53	73,790.90		194,726.43
250 Unemployment Compensation	114.38	62.43		176.81
260 Workers' Compensation	3,744.55	2,460.32		6,204.87
270 Group Insurance – Self-Insurance	72,244.50	38,581.05		110,825.55
Total Personnel Services – Employee Benefits	\$227,335.72	\$135,566.46		\$362,902.18
300 Purchased Professional and Technical Services				
329 Professional Educational Services – Other		52,753.00		52,753.00
Total Purchased Professional and Technical Services		\$52,753.00		\$52,753.00
500 Other Purchased Services				
569 Tuition – Other		2,206,201.59		2,206,201.59
580 Travel	719.79	7,936.06		8,655.85
Total Other Purchased Services	\$719.79	\$2,214,137.65		\$2,214,857.44
600 Supplies				
610 General Supplies	13,462.25			13,462.25
640 Books and Periodicals	71,536.58			71,536.58
Total Supplies	\$84,998.83			\$84,998.83
Total 1400 Other Instructional Programs – Elementary / Secondary	\$715,310.64	\$2,673,672.91		\$3,388,983.55

General Fund (10)

1420 Summer School

100 Personnel Services – Salaries

100 Personnel Services – Salaries

Total Personnel Services – Salaries

200 Personnel Services – Employee Benefits

220 Social Security Contributions

230 PSERS Retirement Contributions

Total Personnel Services – Employee Benefits

Total 1420 Summer School

	<u>Elementary</u>	<u>Secondary</u>	<u>Federal</u>	<u>Total</u>
		1,898.00		1,898.00
		\$1,898.00		\$1,898.00
		145.19		145.19
		569.97		569.97
		\$715.16		\$715.16
		\$2,613.16		\$2,613.16

General Fund (10)

	<u>Elementary</u>	<u>Secondary</u>	<u>Federal</u>	<u>Total</u>
1430 Homebound Instruction				
100 Personnel Services – Salaries				
100 Personnel Services – Salaries	8,646.15	57,652.05		66,298.20
Total Personnel Services – Salaries	\$8,646.15	\$57,652.05		\$66,298.20
200 Personnel Services – Employee Benefits				
220 Social Security Contributions	655.39	4,383.74		5,039.13
230 PSERS Retirement Contributions	2,438.82	9,364.72		11,803.54
250 Unemployment Compensation	8.23	21.81		30.04
260 Workers' Compensation	243.51	1,089.32		1,332.83
Total Personnel Services – Employee Benefits	\$3,345.95	\$14,859.59		\$18,205.54
300 Purchased Professional and Technical Services				
329 Professional Educational Services – Other		52,753.00		52,753.00
Total Purchased Professional and Technical Services		\$52,753.00		\$52,753.00
500 Other Purchased Services				
580 Travel		7,936.06		7,936.06
Total Other Purchased Services		\$7,936.06		\$7,936.06
Total 1430 Homebound Instruction	\$11,992.10	\$133,200.70		\$145,192.80

General Fund (10)

1440 Alternative Regular Education Programs

Elementary

Secondary

Federal

Total

500 Other Purchased Services

569 Tuition – Other

2,206,201.59

2,206,201.59

Total Other Purchased Services

\$2,206,201.59

\$2,206,201.59

Total 1440 Alternative Regular Education Programs

\$2,206,201.59

\$2,206,201.59

General Fund (10)

1441 Adjudicated / Court-Placed Programs

Elementary

Secondary

Federal

Total

500 Other Purchased Services

569 Tuition – Other

598,344.81

598,344.81

Total Other Purchased Services

\$598,344.81

\$598,344.81

Total 1441 Adjudicated / Court-Placed Programs

\$598,344.81

\$598,344.81

General Fund (10)

1442 Alternative Education Programs

500 Other Purchased Services

569 Tuition – Other

Total Other Purchased Services

Total 1442 Alternative Education Programs

Elementary

Secondary

Federal

Total

1,607,856.78

1,607,856.78

\$1,607,856.78

\$1,607,856.78

\$1,607,856.78

\$1,607,856.78

General Fund (10)

	<u>Elementary</u>	<u>Secondary</u>	<u>Federal</u>	<u>Total</u>
1490 Additional Other Instructional Programs				
100 Personnel Services – Salaries				
100 Personnel Services – Salaries	393,610.15	211,665.75		605,275.90
Total Personnel Services – Salaries	\$393,610.15	\$211,665.75		\$605,275.90
200 Personnel Services – Employee Benefits				
210 Group Insurance – Contracted Provider	296.53	321.25		617.78
220 Social Security Contributions	29,344.84	15,821.58		45,166.42
230 PSERS Retirement Contributions	118,496.71	63,856.21		182,352.92
250 Unemployment Compensation	106.15	40.62		146.77
260 Workers' Compensation	3,501.04	1,371.00		4,872.04
270 Group Insurance – Self-Insurance	72,244.50	38,581.05		110,825.55
Total Personnel Services – Employee Benefits	\$223,989.77	\$119,991.71		\$343,981.48
500 Other Purchased Services				
580 Travel	719.79			719.79
Total Other Purchased Services	\$719.79			\$719.79
600 Supplies				
610 General Supplies	13,462.25			13,462.25
640 Books and Periodicals	71,536.58			71,536.58
Total Supplies	\$84,998.83			\$84,998.83
Total 1490 Additional Other Instructional Programs	\$703,318.54	\$331,657.46		\$1,034,976.00

LEA : 122092102 Central Bucks SD

Printed 1/17/2018 8:31:08 AM

General Fund (10)

1500 Nonpublic School Programs

Elementary

Secondary

Federal

Total

500 Other Purchased Services

592 Services Purchased From Another LEA Within the State

4,153.00

Total Other Purchased Services

\$4,153.00

Total 1500 Nonpublic School Programs

\$4,153.00

General Fund (10)

2000 Support Services

Total

100 Personnel Services – Salaries

100 Personnel Services – Salaries 42,407,881.63

Total Personnel Services – Salaries \$42,407,881.63

200 Personnel Services – Employee Benefits

210 Group Insurance – Contracted Provider 58,388.67

220 Social Security Contributions 3,113,724.33

230 PSERS Retirement Contributions 12,616,458.53

240 Tuition Reimbursement 287,342.87

250 Unemployment Compensation 10,861.52

260 Workers' Compensation 407,012.32

270 Group Insurance – Self-Insurance 10,692,430.65

291 Other Retirement Plans 204,189.05

299 All Other Employee Benefits 14,630.39

Total Personnel Services – Employee Benefits \$27,405,038.33

300 Purchased Professional and Technical Services

310 Official / Administrative Services 746,446.42

329 Professional Educational Services – Other 20,215.18

330 Other Professional Services 543,875.64

340 Technical Services 140,749.75

350 Security / Safety Services 59,872.00

Total Purchased Professional and Technical Services \$1,511,158.99

400 Purchased Property Services

410 Cleaning Services 727,923.53

420 Utility Services 2,476,235.44

430 Repairs and Maintenance Services 1,745,611.98

440 Rentals 70,323.61

460 Extermination Services 24,000.00

490 Other Purchased Property Services 530,025.95

Total Purchased Property Services \$5,574,120.51

500 Other Purchased Services

511 Student Transportation Services from Another LEA Within the State 185,751.00

513 Contracted Carriers 7,962,168.04

516 Student Transportation Services From the IU 476,692.50

520 Insurance – General 229,354.00

521 Fire Insurance 368,424.00

522 Automotive Liability Insurance 183,363.00

523 General Property and Liability Insurance 211,406.00

529 Other Insurance 18,346.00

530 Communications 527,008.96

549 Other Advertising/Public Relations 40,816.30

550 Printing and Binding 8,700.00

580 Travel 83,848.51

595 IU Payments By Withholding 136,742.58

596 Direct Payments To Intermediate Units 87,891.00

General Fund (10)

2000 Support Services

	<u>Total</u>
Total Other Purchased Services	\$10,520,511.89
600 <u>Supplies</u>	
610 General Supplies	2,479,704.64
620 Energy	1,090,737.61
630 Food	25,915.96
640 Books and Periodicals	91,746.14
650 Supplies & Fees – Technology Related	335,715.63
Total Supplies	\$4,023,819.98
700 <u>Property</u>	
752 Capital Equipment – Original and Additional	101,565.13
758 Capitalized Technology Software - Original	23,392.75
762 Capitalized Equipment - Replacement	63,462.40
Total Property	\$188,420.28
800 <u>Other Objects</u>	
810 Dues and Fees	53,687.20
890 Miscellaneous Expenditures	375.00
Total Other Objects	\$54,062.20
Total 2000 Support Services	\$91,685,013.81

General Fund (10)

	<u>Elementary</u>	<u>Secondary</u>	<u>Federal</u>	<u>Total</u>
2100 Support Services – Students				
100 Personnel Services – Salaries				
100 Personnel Services – Salaries	3,955,726.77	4,025,516.59		8,295,362.97
Total Personnel Services – Salaries	\$3,955,726.77	\$4,025,516.59		\$8,295,362.97
200 Personnel Services – Employee Benefits				
210 Group Insurance – Contracted Provider	7,756.81	7,832.88		16,203.26
220 Social Security Contributions	289,131.30	292,943.14		604,293.06
230 PSERS Retirement Contributions	1,192,210.21	1,193,951.76		2,480,492.01
250 Unemployment Compensation	756.91	836.24		1,760.46
260 Workers' Compensation	25,405.65	28,201.09		59,255.24
270 Group Insurance – Self-Insurance	922,285.43	885,393.74		1,985,072.81
291 Other Retirement Plans	4,441.40	4,811.53		9,252.93
Total Personnel Services – Employee Benefits	\$2,441,987.71	\$2,413,970.38		\$5,156,329.77
300 Purchased Professional and Technical Services				
330 Other Professional Services	21,492.02	19,545.53		41,037.55
Total Purchased Professional and Technical Services	\$21,492.02	\$19,545.53		\$41,037.55
400 Purchased Property Services				
430 Repairs and Maintenance Services	240.00	260.00		500.00
Total Purchased Property Services	\$240.00	\$260.00		\$500.00
500 Other Purchased Services				
580 Travel	2,178.10	842.48		3,020.58
Total Other Purchased Services	\$2,178.10	\$842.48		\$3,020.58
600 Supplies				
610 General Supplies	36,962.51	21,610.61		58,573.12
630 Food	633.92	686.74		1,320.66
640 Books and Periodicals	287.42	111.17		398.59
650 Supplies & Fees – Technology Related	239.52	259.48		499.00
Total Supplies	\$38,123.37	\$22,668.00		\$60,791.37
Total 2100 Support Services – Students	\$6,459,747.97	\$6,482,802.98		\$13,557,042.24

General Fund (10)

	<u>Elementary</u>	<u>Secondary</u>	<u>Federal</u>	<u>Total</u>
2110 Supervision of Student Services				
100 Personnel Services – Salaries				
100 Personnel Services – Salaries	72,711.10	75,678.90		148,390.00
Total Personnel Services – Salaries	\$72,711.10	\$75,678.90		\$148,390.00
200 Personnel Services – Employee Benefits				
210 Group Insurance – Contracted Provider	139.13	150.72		289.85
220 Social Security Contributions	4,655.63	5,043.59		9,699.22
230 PSERS Retirement Contributions	21,389.52	23,171.99		44,561.51
250 Unemployment Compensation	7.30	7.91		15.21
260 Workers' Compensation	246.48	267.02		513.50
270 Group Insurance – Self-Insurance	15,830.02	17,149.19		32,979.21
291 Other Retirement Plans	1,771.33	1,918.95		3,690.28
Total Personnel Services – Employee Benefits	\$44,039.41	\$47,709.37		\$91,748.78
Total 2110 Supervision of Student Services	\$116,750.51	\$123,388.27		\$240,138.78

General Fund (10)

	<u>Elementary</u>	<u>Secondary</u>	<u>Federal</u>	<u>Total</u>
2111 Supervision of Student Services – Head of Component				
100 Personnel Services – Salaries				
100 Personnel Services – Salaries	72,711.10	75,678.90		148,390.00
Total Personnel Services – Salaries	\$72,711.10	\$75,678.90		\$148,390.00
200 Personnel Services – Employee Benefits				
210 Group Insurance – Contracted Provider	139.13	150.72		289.85
220 Social Security Contributions	4,655.63	5,043.59		9,699.22
230 PSERS Retirement Contributions	21,389.52	23,171.99		44,561.51
250 Unemployment Compensation	7.30	7.91		15.21
260 Workers' Compensation	246.48	267.02		513.50
270 Group Insurance – Self-Insurance	15,830.02	17,149.19		32,979.21
291 Other Retirement Plans	1,771.33	1,918.95		3,690.28
Total Personnel Services – Employee Benefits	\$44,039.41	\$47,709.37		\$91,748.78
Total 2111 Supervision of Student Services – Head of Component	\$116,750.51	\$123,388.27		\$240,138.78

General Fund (10)

	<u>Elementary</u>	<u>Secondary</u>	<u>Federal</u>	<u>Total</u>
2120 Guidance Services				
100 Personnel Services – Salaries				
100 Personnel Services – Salaries	1,670,830.06	3,148,610.24		4,819,440.30
Total Personnel Services – Salaries	\$1,670,830.06	\$3,148,610.24		\$4,819,440.30
200 Personnel Services – Employee Benefits				
210 Group Insurance – Contracted Provider	3,294.82	6,118.94		9,413.76
220 Social Security Contributions	123,109.74	229,826.56		352,936.30
230 PSERS Retirement Contributions	501,130.39	929,025.69		1,430,156.08
250 Unemployment Compensation	295.60	678.35		973.95
260 Workers' Compensation	10,084.08	22,880.11		32,964.19
270 Group Insurance – Self-Insurance	384,077.43	702,929.84		1,087,007.27
Total Personnel Services – Employee Benefits	\$1,021,992.06	\$1,891,459.49		\$2,913,451.55
600 Supplies				
610 General Supplies	3,969.17	8,108.02		12,077.19
Total Supplies	\$3,969.17	\$8,108.02		\$12,077.19
Total 2120 Guidance Services	\$2,696,791.29	\$5,048,177.75		\$7,744,969.04

General Fund (10)

2130 Attendance Services

Elementary

Secondary

Federal

Total

100 Personnel Services – Salaries

100 Personnel Services – Salaries

314,119.61

Total Personnel Services – Salaries

\$314,119.61

200 Personnel Services – Employee Benefits

210 Group Insurance – Contracted Provider

613.57

220 Social Security Contributions

22,218.62

230 PSERS Retirement Contributions

94,330.04

250 Unemployment Compensation

167.31

260 Workers' Compensation

5,648.50

270 Group Insurance – Self-Insurance

177,393.64

Total Personnel Services – Employee Benefits

\$300,371.68

Total 2130 Attendance Services

\$614,491.29

General Fund (10)

2140 Psychological Services

	<u>Elementary</u>	<u>Secondary</u>	<u>Federal</u>	<u>Total</u>
100 Personnel Services – Salaries				
100 Personnel Services – Salaries	896,413.58	346,727.41		1,243,140.99
Total Personnel Services – Salaries	\$896,413.58	\$346,727.41		\$1,243,140.99
200 Personnel Services – Employee Benefits				
210 Group Insurance – Contracted Provider	1,748.32	679.90		2,428.22
220 Social Security Contributions	65,737.10	25,214.16		90,951.26
230 PSERS Retirement Contributions	268,864.87	104,093.62		372,958.49
250 Unemployment Compensation	182.52	60.84		243.36
260 Workers' Compensation	6,162.00	2,054.00		8,216.00
270 Group Insurance – Self-Insurance	213,894.23	79,199.84		293,094.07
Total Personnel Services – Employee Benefits	\$556,589.04	\$211,302.36		\$767,891.40
300 Purchased Professional and Technical Services				
330 Other Professional Services	3,450.00			3,450.00
Total Purchased Professional and Technical Services	\$3,450.00			\$3,450.00
500 Other Purchased Services				
580 Travel	2,178.10	842.48		3,020.58
Total Other Purchased Services	\$2,178.10	\$842.48		\$3,020.58
600 Supplies				
610 General Supplies	31,929.55	12,350.16		44,279.71
640 Books and Periodicals	287.42	111.17		398.59
Total Supplies	\$32,216.97	\$12,461.33		\$44,678.30
Total 2140 Psychological Services	\$1,490,847.69	\$571,333.58		\$2,062,181.27

General Fund (10)

	<u>Elementary</u>	<u>Secondary</u>	<u>Federal</u>	<u>Total</u>
2150 Speech Pathology and Audiology Services				
100 Personnel Services – Salaries				
100 Personnel Services – Salaries	1,127,191.65	250,204.62		1,377,396.27
Total Personnel Services – Salaries	\$1,127,191.65	\$250,204.62		\$1,377,396.27
200 Personnel Services – Employee Benefits				
210 Group Insurance – Contracted Provider	2,206.18	484.28		2,690.46
220 Social Security Contributions	82,825.23	18,988.26		101,813.49
230 PSERS Retirement Contributions	344,201.16	76,317.51		420,518.67
250 Unemployment Compensation	244.05	59.41		303.46
260 Workers' Compensation	7,992.43	2,002.57		9,995.00
270 Group Insurance – Self-Insurance	273,801.31	48,542.23		322,343.54
Total Personnel Services – Employee Benefits	\$711,270.36	\$146,394.26		\$857,664.62
Total 2150 Speech Pathology and Audiology Services	\$1,838,462.01	\$396,598.88		\$2,235,060.89

General Fund (10)

2190 Other Student Services

	<u>Elementary</u>	<u>Secondary</u>	<u>Federal</u>	<u>Total</u>
100 Personnel Services – Salaries				
100 Personnel Services – Salaries	188,580.38	204,295.42		392,875.80
Total Personnel Services – Salaries	\$188,580.38	\$204,295.42		\$392,875.80
200 Personnel Services – Employee Benefits				
210 Group Insurance – Contracted Provider	368.36	399.04		767.40
220 Social Security Contributions	12,803.60	13,870.57		26,674.17
230 PSERS Retirement Contributions	56,624.27	61,342.95		117,967.22
250 Unemployment Compensation	27.44	29.73		57.17
260 Workers' Compensation	920.66	997.39		1,918.05
270 Group Insurance – Self-Insurance	34,682.44	37,572.64		72,255.08
291 Other Retirement Plans	2,670.07	2,892.58		5,562.65
Total Personnel Services – Employee Benefits	\$108,096.84	\$117,104.90		\$225,201.74
300 Purchased Professional and Technical Services				
330 Other Professional Services	18,042.02	19,545.53		37,587.55
Total Purchased Professional and Technical Services	\$18,042.02	\$19,545.53		\$37,587.55
400 Purchased Property Services				
430 Repairs and Maintenance Services	240.00	260.00		500.00
Total Purchased Property Services	\$240.00	\$260.00		\$500.00
600 Supplies				
610 General Supplies	1,063.79	1,152.43		2,216.22
630 Food	633.92	686.74		1,320.66
650 Supplies & Fees – Technology Related	239.52	259.48		499.00
Total Supplies	\$1,937.23	\$2,098.65		\$4,035.88
Total 2190 Other Student Services	\$316,896.47	\$343,304.50		\$660,200.97

General Fund (10)

2200 Support Services – Instructional Staff

	<u>Elementary</u>	<u>Secondary</u>	<u>Federal</u>	<u>Total</u>
100 Personnel Services – Salaries				
100 Personnel Services – Salaries	3,678,088.04	2,830,885.76	10,111.63	6,519,085.43
Total Personnel Services – Salaries	\$3,678,088.04	\$2,830,885.76	\$10,111.63	\$6,519,085.43
200 Personnel Services – Employee Benefits				
210 Group Insurance – Contracted Provider	3,950.56	1,609.48		5,560.04
220 Social Security Contributions	269,210.05	205,982.89	773.54	475,966.48
230 PSERS Retirement Contributions	1,096,121.40	834,341.30	3,036.52	1,933,499.22
240 Tuition Reimbursement	103,258.50	111,863.37		215,121.87
250 Unemployment Compensation	848.48	594.59		1,443.07
260 Workers' Compensation	28,536.78	19,952.41		48,489.19
270 Group Insurance – Self-Insurance	603,439.04	433,366.48		1,036,805.52
291 Other Retirement Plans	17,036.91	18,360.05		35,396.96
Total Personnel Services – Employee Benefits	\$2,122,401.72	\$1,626,070.57	\$3,810.06	\$3,752,282.35
300 Purchased Professional and Technical Services				
329 Professional Educational Services – Other	11,569.50	3,000.00	5,507.88	20,077.38
330 Other Professional Services		750.00		750.00
340 Technical Services	8,205.00	8,888.75		17,093.75
Total Purchased Professional and Technical Services	\$19,774.50	\$12,638.75	\$5,507.88	\$37,921.13
400 Purchased Property Services				
430 Repairs and Maintenance Services	1,365.42	57,162.05		58,527.47
440 Rentals	240.00	260.00		500.00
Total Purchased Property Services	\$1,605.42	\$57,422.05		\$59,027.47
500 Other Purchased Services				
530 Communications	72,352.38	78,381.74		150,734.12
580 Travel	2,482.52	2,457.45	14,215.20	19,155.17
Total Other Purchased Services	\$74,834.90	\$80,839.19	\$14,215.20	\$169,889.29
600 Supplies				
610 General Supplies	28,092.38	69,783.23		97,875.61
630 Food	708.80	652.50		1,361.30
640 Books and Periodicals	45,717.96	31,402.97		77,120.93
650 Supplies & Fees – Technology Related	226,473.00	89,768.22		316,241.22
Total Supplies	\$300,992.14	\$191,606.92		\$492,599.06
800 Other Objects				
810 Dues and Fees	301.58	6,299.06		6,600.64
Total Other Objects	\$301.58	\$6,299.06		\$6,600.64
Total 2200 Support Services – Instructional Staff	\$6,197,998.30	\$4,805,762.30	\$33,644.77	\$11,037,405.37

General Fund (10)

	<u>Elementary</u>	<u>Secondary</u>	<u>Federal</u>	<u>Total</u>
2220 Technology Support Services				
100 Personnel Services – Salaries				
100 Personnel Services – Salaries	52,874.24	67,832.37		120,706.61
Total Personnel Services – Salaries	\$52,874.24	\$67,832.37		\$120,706.61
200 Personnel Services – Employee Benefits				
220 Social Security Contributions	3,782.76	4,887.91		8,670.67
230 PSERS Retirement Contributions	15,878.12	20,370.02		36,248.14
250 Unemployment Compensation	9.97	12.79		22.76
260 Workers' Compensation	337.38	432.83		770.21
270 Group Insurance – Self-Insurance	9,417.21	12,081.33		21,498.54
291 Other Retirement Plans	815.44	1,046.13		1,861.57
Total Personnel Services – Employee Benefits	\$30,240.88	\$38,831.01		\$69,071.89
400 Purchased Property Services				
430 Repairs and Maintenance Services		1,052.99		1,052.99
Total Purchased Property Services		\$1,052.99		\$1,052.99
600 Supplies				
610 General Supplies	13,233.55	13,773.69		27,007.24
Total Supplies	\$13,233.55	\$13,773.69		\$27,007.24
Total 2220 Technology Support Services	\$96,348.67	\$121,490.06		\$217,838.73

General Fund (10)

2240 Computer-Assisted Instruction Support Services

	<u>Elementary</u>	<u>Secondary</u>	<u>Federal</u>	<u>Total</u>
100 Personnel Services – Salaries				
100 Personnel Services – Salaries	591,896.03	641,379.78		1,233,275.81
Total Personnel Services – Salaries	\$591,896.03	\$641,379.78		\$1,233,275.81
200 Personnel Services – Employee Benefits				
220 Social Security Contributions	41,716.93	45,205.52		86,922.45
230 PSERS Retirement Contributions	164,391.83	178,091.15		342,482.98
250 Unemployment Compensation	153.96	167.06		321.02
260 Workers' Compensation	5,190.49	5,651.61		10,842.10
270 Group Insurance – Self-Insurance	123,206.81	133,474.04		256,680.85
291 Other Retirement Plans	1,848.81	2,002.87		3,851.68
Total Personnel Services – Employee Benefits	\$336,508.83	\$364,592.25		\$701,101.08
300 Purchased Professional and Technical Services				
340 Technical Services	2,445.00	2,648.75		5,093.75
Total Purchased Professional and Technical Services	\$2,445.00	\$2,648.75		\$5,093.75
400 Purchased Property Services				
430 Repairs and Maintenance Services	982.07	55,693.77		56,675.84
Total Purchased Property Services	\$982.07	\$55,693.77		\$56,675.84
500 Other Purchased Services				
530 Communications	72,352.38	78,381.74		150,734.12
580 Travel	291.52	315.82		607.34
Total Other Purchased Services	\$72,643.90	\$78,697.56		\$151,341.46
600 Supplies				
610 General Supplies	3,991.47	50,655.83		54,647.30
650 Supplies & Fees – Technology Related	226,043.00	70,781.70		296,824.70
Total Supplies	\$230,034.47	\$121,437.53		\$351,472.00
Total 2240 Computer-Assisted Instruction Support Services	\$1,234,510.30	\$1,264,449.64		\$2,498,959.94

General Fund (10)

2250 School Library Services

	<u>Elementary</u>	<u>Secondary</u>	<u>Federal</u>	<u>Total</u>
100 Personnel Services – Salaries				
100 Personnel Services – Salaries	1,817,202.56	740,340.73		2,557,543.29
Total Personnel Services – Salaries	\$1,817,202.56	\$740,340.73		\$2,557,543.29
200 Personnel Services – Employee Benefits				
210 Group Insurance – Contracted Provider	3,950.56	1,609.48		5,560.04
220 Social Security Contributions	134,573.35	55,390.96		189,964.31
230 PSERS Retirement Contributions	549,605.33	223,264.07		772,869.40
250 Unemployment Compensation	486.18	203.82		690.00
260 Workers' Compensation	16,319.88	6,755.00		23,074.88
270 Group Insurance – Self-Insurance	314,602.79	121,888.37		436,491.16
Total Personnel Services – Employee Benefits	\$1,019,538.09	\$409,111.70		\$1,428,649.79
300 Purchased Professional and Technical Services				
329 Professional Educational Services – Other	1,100.00			1,100.00
Total Purchased Professional and Technical Services	\$1,100.00			\$1,100.00
600 Supplies				
610 General Supplies	9,661.74	4,393.46		14,055.20
640 Books and Periodicals	44,654.53	30,421.35		75,075.88
650 Supplies & Fees – Technology Related	430.00	18,986.52		19,416.52
Total Supplies	\$54,746.27	\$53,801.33		\$108,547.60
800 Other Objects				
810 Dues and Fees		6,020.67		6,020.67
Total Other Objects		\$6,020.67		\$6,020.67
Total 2250 School Library Services	\$2,892,586.92	\$1,209,274.43		\$4,101,861.35

General Fund (10)

	<u>Elementary</u>	<u>Secondary</u>	<u>Federal</u>	<u>Total</u>
2260 Instruction and Curriculum Development Services				
100 Personnel Services – Salaries				
100 Personnel Services – Salaries	546,649.05	656,527.43		1,203,176.48
Total Personnel Services – Salaries	\$546,649.05	\$656,527.43		\$1,203,176.48
200 Personnel Services – Employee Benefits				
220 Social Security Contributions	40,396.98	47,699.62		88,096.60
230 PSERS Retirement Contributions	166,782.46	196,538.91		363,321.37
250 Unemployment Compensation	93.24	97.04		190.28
260 Workers' Compensation	3,139.71	3,267.87		6,407.58
270 Group Insurance – Self-Insurance	77,784.77	80,959.66		158,744.43
291 Other Retirement Plans	6,099.30	6,348.25		12,447.55
Total Personnel Services – Employee Benefits	\$294,296.46	\$334,911.35		\$629,207.81
300 Purchased Professional and Technical Services				
329 Professional Educational Services – Other	9,109.50	3,000.00		12,109.50
Total Purchased Professional and Technical Services	\$9,109.50	\$3,000.00		\$12,109.50
500 Other Purchased Services				
580 Travel		215.16		215.16
Total Other Purchased Services		\$215.16		\$215.16
600 Supplies				
610 General Supplies	639.93	438.07		1,078.00
630 Food	123.80	112.50		236.30
Total Supplies	\$763.73	\$550.57		\$1,314.30
Total 2260 Instruction and Curriculum Development Services	\$850,818.74	\$995,204.51		\$1,846,023.25

General Fund (10)

2270 Instructional Staff Professional Development Services

	<u>Elementary</u>	<u>Secondary</u>	<u>Federal</u>	<u>Total</u>
100 Personnel Services – Salaries				
100 Personnel Services – Salaries	191,571.39	207,086.12	10,111.63	408,769.14
Total Personnel Services – Salaries	\$191,571.39	\$207,086.12	\$10,111.63	\$408,769.14
200 Personnel Services – Employee Benefits				
220 Social Security Contributions	13,890.96	15,045.72	773.54	29,710.22
230 PSERS Retirement Contributions	55,952.00	60,606.19	3,036.52	119,594.71
240 Tuition Reimbursement	103,258.50	111,863.37		215,121.87
250 Unemployment Compensation	24.82	26.88		51.70
260 Workers' Compensation	838.04	907.88		1,745.92
270 Group Insurance – Self-Insurance	16,511.06	17,886.98		34,398.04
Total Personnel Services – Employee Benefits	\$190,475.38	\$206,337.02	\$3,810.06	\$400,622.46
300 Purchased Professional and Technical Services				
329 Professional Educational Services – Other	1,360.00		5,507.88	6,867.88
330 Other Professional Services		750.00		750.00
340 Technical Services	5,760.00	6,240.00		12,000.00
Total Purchased Professional and Technical Services	\$7,120.00	\$6,990.00	\$5,507.88	\$19,617.88
400 Purchased Property Services				
430 Repairs and Maintenance Services	383.35	415.29		798.64
440 Rentals	240.00	260.00		500.00
Total Purchased Property Services	\$623.35	\$675.29		\$1,298.64
500 Other Purchased Services				
580 Travel	2,191.00	1,926.47	14,215.20	18,332.67
Total Other Purchased Services	\$2,191.00	\$1,926.47	\$14,215.20	\$18,332.67
600 Supplies				
610 General Supplies	565.69	522.18		1,087.87
630 Food	585.00	540.00		1,125.00
640 Books and Periodicals	1,063.43	981.62		2,045.05
Total Supplies	\$2,214.12	\$2,043.80		\$4,257.92
800 Other Objects				
810 Dues and Fees	301.58	278.39		579.97
Total Other Objects	\$301.58	\$278.39		\$579.97
Total 2270 Instructional Staff Professional Development Services	\$394,496.82	\$425,337.09	\$33,644.77	\$853,478.68

General Fund (10)

	<u>Elementary</u>	<u>Secondary</u>	<u>Federal</u>	<u>Total</u>
2290 Other Instructional Staff Services				
100 Personnel Services – Salaries				
100 Personnel Services – Salaries	477,894.77	517,719.33		995,614.10
Total Personnel Services – Salaries	\$477,894.77	\$517,719.33		\$995,614.10
200 Personnel Services – Employee Benefits				
220 Social Security Contributions	34,849.07	37,753.16		72,602.23
230 PSERS Retirement Contributions	143,511.66	155,470.96		298,982.62
250 Unemployment Compensation	80.31	87.00		167.31
260 Workers' Compensation	2,711.28	2,937.22		5,648.50
270 Group Insurance – Self-Insurance	61,916.40	67,076.10		128,992.50
291 Other Retirement Plans	8,273.36	8,962.80		17,236.16
Total Personnel Services – Employee Benefits	\$251,342.08	\$272,287.24		\$523,629.32
Total 2290 Other Instructional Staff Services	\$729,236.85	\$790,006.57		\$1,519,243.42

General Fund (10)

	<u>Elementary</u>	<u>Secondary</u>	<u>Federal</u>	<u>Total</u>
2300 Support Services – Administration				
100 Personnel Services – Salaries				
100 Personnel Services – Salaries	3,471,721.42	3,526,005.20		7,967,894.21
Total Personnel Services – Salaries	\$3,471,721.42	\$3,526,005.20		\$7,967,894.21
200 Personnel Services – Employee Benefits				
210 Group Insurance – Contracted Provider	8,301.86	8,780.16		17,082.02
220 Social Security Contributions	237,713.44	250,298.17		554,334.97
230 PSERS Retirement Contributions	1,028,468.17	1,061,688.18		2,328,905.52
250 Unemployment Compensation	609.08	590.93		1,307.48
260 Workers' Compensation	20,651.00	19,974.47		44,547.97
270 Group Insurance – Self-Insurance	491,343.83	460,886.67		1,046,177.56
291 Other Retirement Plans	51,099.50	56,739.78		120,942.57
299 All Other Employee Benefits	2,858.16	3,022.83		5,880.99
Total Personnel Services – Employee Benefits	\$1,841,045.04	\$1,861,981.19		\$4,119,179.08
300 Purchased Professional and Technical Services				
310 Official / Administrative Services				746,446.42
329 Professional Educational Services – Other		137.80		137.80
330 Other Professional Services		16,568.90		320,313.99
340 Technical Services				500.00
Total Purchased Professional and Technical Services		\$16,706.70		\$1,067,398.21
400 Purchased Property Services				
430 Repairs and Maintenance Services				2,711.88
440 Rentals				19,063.57
Total Purchased Property Services				\$21,775.45
500 Other Purchased Services				
520 Insurance – General				229,354.00
530 Communications	2,936.45	18,781.07		43,664.88
549 Other Advertising/Public Relations				27,836.58
550 Printing and Binding				8,700.00
580 Travel		10,799.16		24,321.93
Total Other Purchased Services	\$2,936.45	\$29,580.23		\$333,877.39
600 Supplies				
610 General Supplies	16,509.37	86,956.51		152,806.73
630 Food	540.90	8,527.72		21,303.97
640 Books and Periodicals		1,161.82		13,913.67
650 Supplies & Fees – Technology Related				7,892.95
Total Supplies	\$17,050.27	\$96,646.05		\$195,917.32
800 Other Objects				
810 Dues and Fees	8,056.92	12,085.00		38,667.92
Total Other Objects	\$8,056.92	\$12,085.00		\$38,667.92
Total 2300 Support Services – Administration	\$5,340,810.10	\$5,543,004.37		\$13,744,709.58

General Fund (10)

2310 Board Services

Elementary

Secondary

Federal

Total

500 Other Purchased Services

520 Insurance – General

229,354.00

549 Other Advertising/Public Relations

2,244.86

Total Other Purchased Services

\$231,598.86

800 Other Objects

810 Dues and Fees

15,620.00

Total Other Objects

\$15,620.00

Total 2310 Board Services

\$247,218.86

General Fund (10)

	<u>Elementary</u>	<u>Secondary</u>	<u>Federal</u>	<u>Total</u>
2330 Tax Assessment and Collection Services				
100 Personnel Services – Salaries				
100 Personnel Services – Salaries				170,709.00
Total Personnel Services – Salaries				\$170,709.00
200 Personnel Services – Employee Benefits				
220 Social Security Contributions				13,059.27
Total Personnel Services – Employee Benefits				\$13,059.27
300 Purchased Professional and Technical Services				
310 Official / Administrative Services				746,446.42
Total Purchased Professional and Technical Services				\$746,446.42
500 Other Purchased Services				
530 Communications				5,451.52
Total Other Purchased Services				\$5,451.52
Total 2330 Tax Assessment and Collection Services				\$935,666.21

General Fund (10)

2340 Staff Relations and Negotiations Services

Elementary Secondary Federal Total

300 Purchased Professional and Technical Services

330 Other Professional Services 112,931.12

Total Purchased Professional and Technical Services \$112,931.12

400 Purchased Property Services

430 Repairs and Maintenance Services 2,623.85

Total Purchased Property Services \$2,623.85

500 Other Purchased Services

549 Other Advertising/Public Relations 25,475.00

580 Travel 3,023.63

Total Other Purchased Services \$28,498.63

600 Supplies

610 General Supplies 17,300.98

630 Food 1,200.49

640 Books and Periodicals 4,795.45

650 Supplies & Fees – Technology Related 7,700.00

Total Supplies \$30,996.92

800 Other Objects

810 Dues and Fees 879.61

Total Other Objects \$879.61

Total 2340 Staff Relations and Negotiations Services \$175,930.13

General Fund (10)

2350 Legal and Accounting Services

Elementary

Secondary

Federal

Total

300 Purchased Professional and Technical Services

330 Other Professional Services

116,568.41

Total Purchased Professional and Technical Services

\$116,568.41

Total 2350 Legal and Accounting Services

\$116,568.41

General Fund (10)

	<u>Elementary</u>	<u>Secondary</u>	<u>Federal</u>	<u>Total</u>
2360 Office of the Superintendent / Executive Director Services				
100 Personnel Services – Salaries				
100 Personnel Services – Salaries				711,905.79
Total Personnel Services – Salaries				\$711,905.79
200 Personnel Services – Employee Benefits				
220 Social Security Contributions				46,965.74
230 PSERS Retirement Contributions				212,517.17
250 Unemployment Compensation				91.26
260 Workers' Compensation				3,081.00
270 Group Insurance – Self-Insurance				71,763.77
291 Other Retirement Plans				12,010.86
Total Personnel Services – Employee Benefits				\$346,429.80
500 Other Purchased Services				
530 Communications	184.73	200.13		384.86
580 Travel				5,427.47
Total Other Purchased Services	\$184.73	\$200.13		\$5,812.33
600 Supplies				
630 Food				9,396.29
640 Books and Periodicals				785.25
Total Supplies				\$10,181.54
800 Other Objects				
810 Dues and Fees				299.94
Total Other Objects				\$299.94
Total 2360 Office of the Superintendent / Executive Director Services	\$184.73	\$200.13		\$1,074,629.40

General Fund (10)

	<u>Elementary</u>	<u>Secondary</u>	<u>Federal</u>	<u>Total</u>
2370 Community Relations Services				
100 Personnel Services – Salaries				
100 Personnel Services – Salaries				87,552.80
Total Personnel Services – Salaries				\$87,552.80
200 Personnel Services – Employee Benefits				
220 Social Security Contributions				6,298.35
230 PSERS Retirement Contributions				26,232.00
250 Unemployment Compensation				16.21
260 Workers' Compensation				841.50
270 Group Insurance – Self-Insurance				22,183.29
291 Other Retirement Plans				1,092.43
Total Personnel Services – Employee Benefits				\$56,663.78
300 Purchased Professional and Technical Services				
340 Technical Services				500.00
Total Purchased Professional and Technical Services				\$500.00
400 Purchased Property Services				
430 Repairs and Maintenance Services				88.03
Total Purchased Property Services				\$88.03
500 Other Purchased Services				
550 Printing and Binding				8,700.00
580 Travel				1,167.70
Total Other Purchased Services				\$9,867.70
600 Supplies				
610 General Supplies				2,918.47
650 Supplies & Fees – Technology Related				192.95
Total Supplies				\$3,111.42
800 Other Objects				
810 Dues and Fees				425.00
Total Other Objects				\$425.00
Total 2370 Community Relations Services				\$158,208.73

General Fund (10)

	<u>Elementary</u>	<u>Secondary</u>	<u>Federal</u>	<u>Total</u>
2380 Office of the Principal Services				
100 Personnel Services – Salaries				
100 Personnel Services – Salaries	3,471,721.42	3,526,005.20		6,997,726.62
Total Personnel Services – Salaries	\$3,471,721.42	\$3,526,005.20		\$6,997,726.62
200 Personnel Services – Employee Benefits				
210 Group Insurance – Contracted Provider	8,301.86	8,780.16		17,082.02
220 Social Security Contributions	237,713.44	250,298.17		488,011.61
230 PSERS Retirement Contributions	1,028,468.17	1,061,688.18		2,090,156.35
250 Unemployment Compensation	609.08	590.93		1,200.01
260 Workers' Compensation	20,651.00	19,974.47		40,625.47
270 Group Insurance – Self-Insurance	491,343.83	460,886.67		952,230.50
291 Other Retirement Plans	51,099.50	56,739.78		107,839.28
299 All Other Employee Benefits	2,858.16	3,022.83		5,880.99
Total Personnel Services – Employee Benefits	\$1,841,045.04	\$1,861,981.19		\$3,703,026.23
300 Purchased Professional and Technical Services				
329 Professional Educational Services – Other		137.80		137.80
330 Other Professional Services		16,568.90		16,568.90
Total Purchased Professional and Technical Services		\$16,706.70		\$16,706.70
500 Other Purchased Services				
530 Communications	2,751.72	18,580.94		21,332.66
580 Travel		10,799.16		10,799.16
Total Other Purchased Services	\$2,751.72	\$29,380.10		\$32,131.82
600 Supplies				
610 General Supplies	16,509.37	86,956.51		103,465.88
630 Food	540.90	8,527.72		9,068.62
640 Books and Periodicals		1,161.82		1,161.82
Total Supplies	\$17,050.27	\$96,646.05		\$113,696.32
800 Other Objects				
810 Dues and Fees	8,056.92	12,085.00		20,141.92
Total Other Objects	\$8,056.92	\$12,085.00		\$20,141.92
Total 2380 Office of the Principal Services	\$5,340,625.37	\$5,542,804.24		\$10,883,429.61

General Fund (10)

2390 Other Administration Services

Elementary

Secondary

Federal

Total

300 Purchased Professional and Technical Services

330 Other Professional Services

74,245.56

Total Purchased Professional and Technical Services

\$74,245.56

400 Purchased Property Services

440 Rentals

19,063.57

Total Purchased Property Services

\$19,063.57

500 Other Purchased Services

530 Communications

16,495.84

549 Other Advertising/Public Relations

116.72

580 Travel

3,903.97

Total Other Purchased Services

\$20,516.53

600 Supplies

610 General Supplies

29,121.40

630 Food

1,638.57

640 Books and Periodicals

7,171.15

Total Supplies

\$37,931.12

800 Other Objects

810 Dues and Fees

1,301.45

Total Other Objects

\$1,301.45

Total 2390 Other Administration Services

\$153,058.23

General Fund (10)

2400 Support Services – Pupil Health

Elementary Secondary Federal Total

100 Personnel Services – Salaries

100 Personnel Services – Salaries 2,473,498.20

Total Personnel Services – Salaries \$2,473,498.20

200 Personnel Services – Employee Benefits

210 Group Insurance – Contracted Provider 6,322.79

220 Social Security Contributions 181,220.02

230 PSERS Retirement Contributions 713,664.02

250 Unemployment Compensation 819.54

260 Workers' Compensation 27,618.15

270 Group Insurance – Self-Insurance 930,754.86

Total Personnel Services – Employee Benefits \$1,860,399.38

300 Purchased Professional and Technical Services

330 Other Professional Services 49,046.00

Total Purchased Professional and Technical Services \$49,046.00

500 Other Purchased Services

580 Travel 819.14

Total Other Purchased Services \$819.14

600 Supplies

610 General Supplies 53,082.95

640 Books and Periodicals 12.95

Total Supplies \$53,095.90

800 Other Objects

810 Dues and Fees 575.00

Total Other Objects \$575.00

Total 2400 Support Services – Pupil Health \$4,437,433.62

General Fund (10)

2440 Nursing Services

	<u>Elementary</u>	<u>Secondary</u>	<u>Federal</u>	<u>Total</u>
100 Personnel Services – Salaries				
100 Personnel Services – Salaries				2,391,715.73
Total Personnel Services – Salaries				\$2,391,715.73
200 Personnel Services – Employee Benefits				
210 Group Insurance – Contracted Provider				6,322.79
220 Social Security Contributions				175,160.55
230 PSERS Retirement Contributions				689,104.84
250 Unemployment Compensation				804.98
260 Workers' Compensation				27,129.85
270 Group Insurance – Self-Insurance				920,722.24
Total Personnel Services – Employee Benefits				\$1,819,245.25
300 Purchased Professional and Technical Services				
330 Other Professional Services				49,046.00
Total Purchased Professional and Technical Services				\$49,046.00
500 Other Purchased Services				
580 Travel				819.14
Total Other Purchased Services				\$819.14
600 Supplies				
610 General Supplies				53,082.95
640 Books and Periodicals				12.95
Total Supplies				\$53,095.90
800 Other Objects				
810 Dues and Fees				575.00
Total Other Objects				\$575.00
Total 2440 Nursing Services				\$4,314,497.02

General Fund (10)

2450 Nonpublic Health Services

Elementary

Secondary

Federal

Total

100 Personnel Services – Salaries

100 Personnel Services – Salaries

81,782.47

Total Personnel Services – Salaries

\$81,782.47

200 Personnel Services – Employee Benefits

220 Social Security Contributions

6,059.47

230 PSERS Retirement Contributions

24,559.18

250 Unemployment Compensation

14.56

260 Workers' Compensation

488.30

270 Group Insurance – Self-Insurance

10,032.62

Total Personnel Services – Employee Benefits

\$41,154.13

Total 2450 Nonpublic Health Services

\$122,936.60

General Fund (10)

2500 Support Services – Business

Elementary Secondary Federal Total

100 Personnel Services – Salaries

100 Personnel Services – Salaries 978,437.66

Total Personnel Services – Salaries \$978,437.66

200 Personnel Services – Employee Benefits

210 Group Insurance – Contracted Provider 741.34

220 Social Security Contributions 67,795.93

230 PSERS Retirement Contributions 293,474.80

250 Unemployment Compensation 197.73

260 Workers' Compensation 6,675.50

270 Group Insurance – Self-Insurance 146,267.73

291 Other Retirement Plans 12,829.03

Total Personnel Services – Employee Benefits \$527,982.06

300 Purchased Professional and Technical Services

330 Other Professional Services 28,434.10

Total Purchased Professional and Technical Services \$28,434.10

400 Purchased Property Services

430 Repairs and Maintenance Services 6,801.54

440 Rentals 1,153.39

Total Purchased Property Services \$7,954.93

500 Other Purchased Services

530 Communications 1,979.76

549 Other Advertising/Public Relations 12,979.72

580 Travel 1,776.19

Total Other Purchased Services \$16,735.67

600 Supplies

610 General Supplies 12,544.31

630 Food 737.91

640 Books and Periodicals 300.00

Total Supplies \$13,582.22

800 Other Objects

810 Dues and Fees 3,899.00

Total Other Objects \$3,899.00

Total 2500 Support Services – Business \$1,577,025.64

General Fund (10)

2510 Fiscal Services

Elementary

Secondary

Federal

Total

100 Personnel Services – Salaries

100 Personnel Services – Salaries 978,437.66

Total Personnel Services – Salaries \$978,437.66

200 Personnel Services – Employee Benefits

210 Group Insurance – Contracted Provider 741.34

220 Social Security Contributions 67,795.93

230 PSERS Retirement Contributions 293,474.80

250 Unemployment Compensation 197.73

260 Workers' Compensation 6,675.50

270 Group Insurance – Self-Insurance 146,267.73

291 Other Retirement Plans 12,829.03

Total Personnel Services – Employee Benefits \$527,982.06

300 Purchased Professional and Technical Services

330 Other Professional Services 28,434.10

Total Purchased Professional and Technical Services \$28,434.10

400 Purchased Property Services

430 Repairs and Maintenance Services 6,801.54

440 Rentals 1,153.39

Total Purchased Property Services \$7,954.93

500 Other Purchased Services

530 Communications 1,979.76

549 Other Advertising/Public Relations 12,979.72

580 Travel 1,776.19

Total Other Purchased Services \$16,735.67

600 Supplies

610 General Supplies 12,544.31

630 Food 737.91

640 Books and Periodicals 300.00

Total Supplies \$13,582.22

800 Other Objects

810 Dues and Fees 3,899.00

Total Other Objects \$3,899.00

Total 2510 Fiscal Services \$1,577,025.64

General Fund (10)

2511 Supervision of Fiscal Services - Head of Component

Elementary

Secondary

Federal

Total

100 Personnel Services – Salaries

100 Personnel Services – Salaries

194,993.30

Total Personnel Services – Salaries

\$194,993.30

200 Personnel Services – Employee Benefits

210 Group Insurance – Contracted Provider

184.51

220 Social Security Contributions

10,247.73

230 PSERS Retirement Contributions

57,455.77

250 Unemployment Compensation

15.21

260 Workers' Compensation

513.50

270 Group Insurance – Self-Insurance

14,332.50

291 Other Retirement Plans

5,409.52

Total Personnel Services – Employee Benefits

\$88,158.74

Total 2511 Supervision of Fiscal Services - Head of Component

\$283,152.04

General Fund (10)

	<u>Elementary</u>	<u>Secondary</u>	<u>Federal</u>	<u>Total</u>
2515 Financial Accounting Services				
100 Personnel Services – Salaries				
100 Personnel Services – Salaries				783,444.36
Total Personnel Services – Salaries				\$783,444.36
200 Personnel Services – Employee Benefits				
210 Group Insurance – Contracted Provider				556.83
220 Social Security Contributions				57,548.20
230 PSERS Retirement Contributions				236,019.03
250 Unemployment Compensation				182.52
260 Workers' Compensation				6,162.00
270 Group Insurance – Self-Insurance				131,935.23
291 Other Retirement Plans				7,419.51
Total Personnel Services – Employee Benefits				\$439,823.32
300 Purchased Professional and Technical Services				
330 Other Professional Services				28,434.10
Total Purchased Professional and Technical Services				\$28,434.10
400 Purchased Property Services				
430 Repairs and Maintenance Services				6,801.54
440 Rentals				1,153.39
Total Purchased Property Services				\$7,954.93
500 Other Purchased Services				
530 Communications				1,979.76
549 Other Advertising/Public Relations				12,979.72
580 Travel				1,776.19
Total Other Purchased Services				\$16,735.67
600 Supplies				
610 General Supplies				12,544.31
630 Food				737.91
640 Books and Periodicals				300.00
Total Supplies				\$13,582.22
800 Other Objects				
810 Dues and Fees				3,899.00
Total Other Objects				\$3,899.00
Total 2515 Financial Accounting Services				\$1,293,873.60

General Fund (10)

2600 Operation and Maintenance of Plant Services

Elementary

Secondary

Federal

Total

100 Personnel Services – Salaries

100 Personnel Services – Salaries 9,544,090.07

Total Personnel Services – Salaries \$9,544,090.07

200 Personnel Services – Employee Benefits

210 Group Insurance – Contracted Provider 7,660.50

220 Social Security Contributions 741,937.24

230 PSERS Retirement Contributions 2,936,574.75

250 Unemployment Compensation 2,158.99

260 Workers' Compensation 111,869.98

270 Group Insurance – Self-Insurance 3,227,583.95

291 Other Retirement Plans 10,182.10

299 All Other Employee Benefits 5,440.50

Total Personnel Services – Employee Benefits \$7,043,408.01

300 Purchased Professional and Technical Services

330 Other Professional Services 101,440.00

Total Purchased Professional and Technical Services \$101,440.00

400 Purchased Property Services

410 Cleaning Services 721,788.27

420 Utility Services 2,458,067.58

430 Repairs and Maintenance Services 915,816.45

440 Rentals 44,331.44

460 Extermination Services 24,000.00

490 Other Purchased Property Services 530,025.95

Total Purchased Property Services \$4,694,029.69

500 Other Purchased Services

521 Fire Insurance 368,424.00

523 General Property and Liability Insurance 211,406.00

529 Other Insurance 18,346.00

580 Travel 8,063.19

Total Other Purchased Services \$606,239.19

600 Supplies

610 General Supplies 864,837.72 936,907.54 1,801,745.26

620 Energy 842,692.56

630 Food 367.80

650 Supplies & Fees – Technology Related 11,082.46

Total Supplies \$864,837.72 \$936,907.54 \$2,655,888.08

700 Property

752 Capital Equipment – Original and Additional 101,565.13

762 Capitalized Equipment - Replacement 63,462.40

Total Property \$165,027.53

800 Other Objects

General Fund (10)

2600 Operation and Maintenance of Plant Services

Elementary

Secondary

Federal

Total

800 Other Objects

810 Dues and Fees

3,844.66

Total Other Objects

\$3,844.66

Total 2600 Operation and Maintenance of Plant Services

\$864,837.72

\$936,907.54

\$24,813,967.23

General Fund (10)

2610 Supervision of Operation and Maintenance of Plant Services

Elementary

Secondary

Federal

Total

100 Personnel Services – Salaries

100 Personnel Services – Salaries

79,905.96

Total Personnel Services – Salaries

\$79,905.96

200 Personnel Services – Employee Benefits

210 Group Insurance – Contracted Provider

64.68

220 Social Security Contributions

3,595.42

230 PSERS Retirement Contributions

23,457.41

250 Unemployment Compensation

14.34

260 Workers' Compensation

212.00

270 Group Insurance – Self-Insurance

5,021.31

291 Other Retirement Plans

1,570.12

Total Personnel Services – Employee Benefits

\$33,935.28

Total 2610 Supervision of Operation and Maintenance of Plant Services

\$113,841.24

General Fund (10)

2611 Supervision of Operation and Maintenance of Plant Services – Head of Component

Elementary

Secondary

Federal

Total

100 Personnel Services – Salaries

100 Personnel Services – Salaries

79,905.96

Total Personnel Services – Salaries

\$79,905.96

200 Personnel Services – Employee Benefits

210 Group Insurance – Contracted Provider

64.68

220 Social Security Contributions

3,595.42

230 PSERS Retirement Contributions

23,457.41

250 Unemployment Compensation

14.34

260 Workers' Compensation

212.00

270 Group Insurance – Self-Insurance

5,021.31

291 Other Retirement Plans

1,570.12

Total Personnel Services – Employee Benefits

\$33,935.28

Total 2611 Supervision of Operation and Maintenance of Plant Services – Head of Component

\$113,841.24

General Fund (10)

2620 Operation of Buildings Services

Elementary Secondary Federal Total

100 Personnel Services – Salaries

100 Personnel Services – Salaries 9,464,184.11

Total Personnel Services – Salaries \$9,464,184.11

200 Personnel Services – Employee Benefits

210 Group Insurance – Contracted Provider 7,595.82

220 Social Security Contributions 738,341.82

230 PSERS Retirement Contributions 2,913,117.34

250 Unemployment Compensation 2,144.65

260 Workers' Compensation 111,657.98

270 Group Insurance – Self-Insurance 3,222,562.64

291 Other Retirement Plans 8,611.98

299 All Other Employee Benefits 5,440.50

Total Personnel Services – Employee Benefits \$7,009,472.73

300 Purchased Professional and Technical Services

330 Other Professional Services 101,440.00

Total Purchased Professional and Technical Services \$101,440.00

400 Purchased Property Services

410 Cleaning Services 721,788.27

420 Utility Services 2,458,067.58

430 Repairs and Maintenance Services 915,816.45

440 Rentals 44,331.44

460 Extermination Services 24,000.00

490 Other Purchased Property Services 530,025.95

Total Purchased Property Services \$4,694,029.69

500 Other Purchased Services

521 Fire Insurance 368,424.00

523 General Property and Liability Insurance 211,406.00

529 Other Insurance 18,346.00

580 Travel 8,063.19

Total Other Purchased Services \$606,239.19

600 Supplies

610 General Supplies 864,837.72 936,907.54 1,801,745.26

620 Energy 842,692.56

630 Food 367.80

650 Supplies & Fees – Technology Related 11,082.46

Total Supplies \$864,837.72 \$936,907.54 \$2,655,888.08

700 Property

752 Capital Equipment – Original and Additional 101,565.13

762 Capitalized Equipment - Replacement 63,462.40

Total Property \$165,027.53

800 Other Objects

LEA : 122092102 Central Bucks SD

Printed 1/17/2018 8:31:09 AM

General Fund (10)

	<u>Elementary</u>	<u>Secondary</u>	<u>Federal</u>	<u>Total</u>
2620 Operation of Buildings Services				
800 Other Objects				
810 Dues and Fees				3,844.66
Total Other Objects				\$3,844.66
Total 2620 Operation of Buildings Services	\$864,837.72	\$936,907.54		\$24,700,125.99

General Fund (10)

	<u>Elementary</u>	<u>Secondary</u>	<u>Federal</u>	<u>Total</u>
2700 Student Transportation Services				
100 Personnel Services – Salaries				
100 Personnel Services – Salaries				5,282,134.76
Total Personnel Services – Salaries				\$5,282,134.76
200 Personnel Services – Employee Benefits				
210 Group Insurance – Contracted Provider				4,324.49
220 Social Security Contributions				389,873.06
230 PSERS Retirement Contributions				1,525,897.41
250 Unemployment Compensation				2,868.97
260 Workers' Compensation				98,363.42
270 Group Insurance – Self-Insurance				2,065,354.12
291 Other Retirement Plans				2,580.83
299 All Other Employee Benefits				2,940.50
Total Personnel Services – Employee Benefits				\$4,092,202.80
300 Purchased Professional and Technical Services				
330 Other Professional Services				2,854.00
Total Purchased Professional and Technical Services				\$2,854.00
400 Purchased Property Services				
410 Cleaning Services				6,135.26
420 Utility Services				18,167.86
430 Repairs and Maintenance Services				105,875.76
440 Rentals				5,275.21
Total Purchased Property Services				\$135,454.09
500 Other Purchased Services				
511 Student Transportation Services from Another LEA Within the State				185,751.00
513 Contracted Carriers				7,962,168.04
516 Student Transportation Services From the IU				476,692.50
522 Automotive Liability Insurance				183,363.00
530 Communications				126,104.77
580 Travel				11,786.13
Total Other Purchased Services				\$8,945,865.44
600 Supplies				
610 General Supplies				207,197.02
620 Energy				248,045.05
630 Food				138.00
Total Supplies				\$455,380.07
800 Other Objects				
810 Dues and Fees				99.98
Total Other Objects				\$99.98
Total 2700 Student Transportation Services				\$18,913,991.14

General Fund (10)

2710 Supervision of Student Transportation Services

Elementary

Secondary

Federal

Total

100 Personnel Services – Salaries

100 Personnel Services – Salaries

104,751.00

Total Personnel Services – Salaries

\$104,751.00

200 Personnel Services – Employee Benefits

220 Social Security Contributions

7,748.41

230 PSERS Retirement Contributions

31,456.75

250 Unemployment Compensation

15.21

260 Workers' Compensation

513.50

270 Group Insurance – Self-Insurance

14,332.50

291 Other Retirement Plans

1,055.82

Total Personnel Services – Employee Benefits

\$55,122.19

Total 2710 Supervision of Student Transportation Services

\$159,873.19

General Fund (10)

2711 Supervision of Student Transportation Services – Head of Component

Elementary

Secondary

Federal

Total

100 Personnel Services – Salaries

100 Personnel Services – Salaries

104,751.00

Total Personnel Services – Salaries

\$104,751.00

200 Personnel Services – Employee Benefits

220 Social Security Contributions

7,748.41

230 PSERS Retirement Contributions

31,456.75

250 Unemployment Compensation

15.21

260 Workers' Compensation

513.50

270 Group Insurance – Self-Insurance

14,332.50

291 Other Retirement Plans

1,055.82

Total Personnel Services – Employee Benefits

\$55,122.19

Total 2711 Supervision of Student Transportation Services – Head of Component

\$159,873.19

General Fund (10)

	<u>Elementary</u>	<u>Secondary</u>	<u>Federal</u>	<u>Total</u>
2720 Vehicle Operation Services				
100 Personnel Services – Salaries				
100 Personnel Services – Salaries				4,649,170.28
Total Personnel Services – Salaries				\$4,649,170.28
200 Personnel Services – Employee Benefits				
210 Group Insurance – Contracted Provider				3,892.03
220 Social Security Contributions				343,137.34
230 PSERS Retirement Contributions				1,341,850.92
250 Unemployment Compensation				2,566.86
260 Workers' Compensation				88,013.58
270 Group Insurance – Self-Insurance				1,844,486.21
291 Other Retirement Plans				1,266.92
299 All Other Employee Benefits				2,646.45
Total Personnel Services – Employee Benefits				\$3,627,860.31
300 Purchased Professional and Technical Services				
330 Other Professional Services				2,568.60
Total Purchased Professional and Technical Services				\$2,568.60
400 Purchased Property Services				
410 Cleaning Services				5,521.73
420 Utility Services				16,351.07
430 Repairs and Maintenance Services				95,288.19
440 Rentals				4,747.69
Total Purchased Property Services				\$121,908.68
500 Other Purchased Services				
511 Student Transportation Services from Another LEA Within the State				167,175.90
513 Contracted Carriers				7,165,951.24
516 Student Transportation Services From the IU				429,023.25
522 Automotive Liability Insurance				165,026.70
530 Communications				113,494.31
580 Travel				10,607.52
Total Other Purchased Services				\$8,051,278.92
600 Supplies				
610 General Supplies				186,477.32
620 Energy				223,240.55
630 Food				124.20
Total Supplies				\$409,842.07
800 Other Objects				
810 Dues and Fees				89.98
Total Other Objects				\$89.98
Total 2720 Vehicle Operation Services				\$16,862,718.84

General Fund (10)

2750 Nonpublic Transportation

Elementary

Secondary

Federal

Total

100 Personnel Services – Salaries

100 Personnel Services – Salaries 528,213.48

Total Personnel Services – Salaries \$528,213.48

200 Personnel Services – Employee Benefits

210 Group Insurance – Contracted Provider 432.46

220 Social Security Contributions 38,987.31

230 PSERS Retirement Contributions 152,589.74

250 Unemployment Compensation 286.90

260 Workers' Compensation 9,836.34

270 Group Insurance – Self-Insurance 206,535.41

291 Other Retirement Plans 258.09

299 All Other Employee Benefits 294.05

Total Personnel Services – Employee Benefits \$409,220.30

300 Purchased Professional and Technical Services

330 Other Professional Services 285.40

Total Purchased Professional and Technical Services \$285.40

400 Purchased Property Services

410 Cleaning Services 613.53

420 Utility Services 1,816.79

430 Repairs and Maintenance Services 10,587.57

440 Rentals 527.52

Total Purchased Property Services \$13,545.41

500 Other Purchased Services

511 Student Transportation Services from Another LEA Within the State 18,575.10

513 Contracted Carriers 796,216.80

516 Student Transportation Services From the IU 47,669.25

522 Automotive Liability Insurance 18,336.30

530 Communications 12,610.46

580 Travel 1,178.61

Total Other Purchased Services \$894,586.52

600 Supplies

610 General Supplies 20,719.70

620 Energy 24,804.50

630 Food 13.80

Total Supplies \$45,538.00

800 Other Objects

810 Dues and Fees 10.00

Total Other Objects \$10.00

Total 2750 Nonpublic Transportation \$1,891,399.11

General Fund (10)

2800 Support Services – Central

	<u>Elementary</u>	<u>Secondary</u>	<u>Federal</u>	<u>Total</u>
100 Personnel Services – Salaries				
100 Personnel Services – Salaries			17,191.63	1,347,378.33
Total Personnel Services – Salaries			\$17,191.63	\$1,347,378.33
200 Personnel Services – Employee Benefits				
210 Group Insurance – Contracted Provider				494.23
220 Social Security Contributions			1,449.65	98,303.57
230 PSERS Retirement Contributions			5,925.17	403,950.80
240 Tuition Reimbursement				72,221.00
250 Unemployment Compensation			4.57	305.28
260 Workers' Compensation			154.05	10,192.87
270 Group Insurance – Self-Insurance			2,866.54	254,414.10
291 Other Retirement Plans			255.14	13,004.63
299 All Other Employee Benefits				368.40
Total Personnel Services – Employee Benefits			\$10,655.12	\$853,254.88
300 Purchased Professional and Technical Services				
340 Technical Services				123,156.00
350 Security / Safety Services				59,872.00
Total Purchased Professional and Technical Services				\$183,028.00
400 Purchased Property Services				
430 Repairs and Maintenance Services				655,378.88
Total Purchased Property Services				\$655,378.88
500 Other Purchased Services				
530 Communications				204,525.43
580 Travel				14,906.18
Total Other Purchased Services				\$219,431.61
600 Supplies				
610 General Supplies				95,879.64
630 Food				686.32
Total Supplies				\$96,565.96
700 Property				
758 Capitalized Technology Software - Original				23,392.75
Total Property				\$23,392.75
800 Other Objects				
890 Miscellaneous Expenditures				375.00
Total Other Objects				\$375.00
Total 2800 Support Services – Central			\$27,846.75	\$3,378,805.41

General Fund (10)

2810 Planning, Research, Development and Evaluation Services	<u>Elementary</u>	<u>Secondary</u>	<u>Federal</u>	<u>Total</u>
100 Personnel Services – Salaries				
100 Personnel Services – Salaries				653,428.37
Total Personnel Services – Salaries				\$653,428.37
200 Personnel Services – Employee Benefits				
210 Group Insurance – Contracted Provider				494.23
220 Social Security Contributions				48,100.81
230 PSERS Retirement Contributions				194,795.14
250 Unemployment Compensation				148.61
260 Workers' Compensation				4,903.82
270 Group Insurance – Self-Insurance				122,555.06
291 Other Retirement Plans				5,456.52
299 All Other Employee Benefits				368.40
Total Personnel Services – Employee Benefits				\$376,822.59
300 Purchased Professional and Technical Services				
340 Technical Services				123,156.00
350 Security / Safety Services				59,872.00
Total Purchased Professional and Technical Services				\$183,028.00
400 Purchased Property Services				
430 Repairs and Maintenance Services				655,378.88
Total Purchased Property Services				\$655,378.88
500 Other Purchased Services				
530 Communications				204,525.43
580 Travel				14,906.18
Total Other Purchased Services				\$219,431.61
600 Supplies				
610 General Supplies				94,053.93
630 Food				686.32
Total Supplies				\$94,740.25
700 Property				
758 Capitalized Technology Software - Original				23,392.75
Total Property				\$23,392.75
Total 2810 Planning, Research, Development and Evaluation Services				\$2,206,222.45

General Fund (10)

2820 Information Services

Elementary

Secondary

Federal

Total

100 Personnel Services – Salaries

100 Personnel Services – Salaries

122,420.96

Total Personnel Services – Salaries

\$122,420.96

200 Personnel Services – Employee Benefits

220 Social Security Contributions

9,025.66

230 PSERS Retirement Contributions

36,762.93

250 Unemployment Compensation

15.21

260 Workers' Compensation

513.50

270 Group Insurance – Self-Insurance

14,332.50

291 Other Retirement Plans

2,454.57

Total Personnel Services – Employee Benefits

\$63,104.37

Total 2820 Information Services

\$185,525.33

General Fund (10)

2821 Supervision of Information Services

Elementary

Secondary

Federal

Total

100 Personnel Services – Salaries

100 Personnel Services – Salaries

122,420.96

Total Personnel Services – Salaries

\$122,420.96

200 Personnel Services – Employee Benefits

220 Social Security Contributions

9,025.66

230 PSERS Retirement Contributions

36,762.93

250 Unemployment Compensation

15.21

260 Workers' Compensation

513.50

270 Group Insurance – Self-Insurance

14,332.50

291 Other Retirement Plans

2,454.57

Total Personnel Services – Employee Benefits

\$63,104.37

Total 2821 Supervision of Information Services

\$185,525.33

General Fund (10)

2830 Staff Services

Elementary

Secondary

Federal

Total

100 Personnel Services – Salaries

100 Personnel Services – Salaries 554,337.37

Total Personnel Services – Salaries \$554,337.37

200 Personnel Services – Employee Benefits

220 Social Security Contributions 39,727.45

230 PSERS Retirement Contributions 166,467.56

240 Tuition Reimbursement 72,221.00

250 Unemployment Compensation 136.89

260 Workers' Compensation 4,621.50

270 Group Insurance – Self-Insurance 114,660.00

291 Other Retirement Plans 4,838.40

Total Personnel Services – Employee Benefits \$402,672.80

600 Supplies

610 General Supplies 1,825.71

Total Supplies \$1,825.71

800 Other Objects

890 Miscellaneous Expenditures 375.00

Total Other Objects \$375.00

Total 2830 Staff Services \$959,210.88

General Fund (10)

2831 Supervision of Staff Services

Elementary

Secondary

Federal

Total

100 Personnel Services – Salaries

100 Personnel Services – Salaries

157,008.00

Total Personnel Services – Salaries

\$157,008.00

200 Personnel Services – Employee Benefits

220 Social Security Contributions

10,201.05

230 PSERS Retirement Contributions

47,149.48

250 Unemployment Compensation

15.21

260 Workers' Compensation

513.50

270 Group Insurance – Self-Insurance

14,332.50

291 Other Retirement Plans

3,146.59

Total Personnel Services – Employee Benefits

\$75,358.33

Total 2831 Supervision of Staff Services

\$232,366.33

General Fund (10)

2832 Recruitment and Placement Services

Elementary

Secondary

Federal

Total

100 Personnel Services – Salaries

100 Personnel Services – Salaries

397,329.37

Total Personnel Services – Salaries

\$397,329.37

200 Personnel Services – Employee Benefits

220 Social Security Contributions

29,526.40

230 PSERS Retirement Contributions

119,318.08

250 Unemployment Compensation

121.68

260 Workers' Compensation

4,108.00

270 Group Insurance – Self-Insurance

100,327.50

291 Other Retirement Plans

1,691.81

Total Personnel Services – Employee Benefits

\$255,093.47

800 Other Objects

890 Miscellaneous Expenditures

375.00

Total Other Objects

\$375.00

Total 2832 Recruitment and Placement Services

\$652,797.84

General Fund (10)

2834 Staff Development Services – Non-Instructional, Certified Staff Only

Elementary

Secondary

Federal

Total

200 Personnel Services – Employee Benefits

240 Tuition Reimbursement

72,221.00

Total Personnel Services – Employee Benefits

\$72,221.00

Total 2834 Staff Development Services – Non-Instructional, Certified Staff Only

\$72,221.00

General Fund (10)

2839 Other Staff Services

600 Supplies

610 General Supplies

	<u>Elementary</u>	<u>Secondary</u>	<u>Federal</u>	<u>Total</u>
Total Supplies				1,825.71
Total 2839 Other Staff Services				\$1,825.71

General Fund (10)

2850 State and Federal Agency Liaison Services

Elementary

Secondary

Federal

Total

100 Personnel Services – Salaries

100 Personnel Services – Salaries

17,191.63

17,191.63

Total Personnel Services – Salaries

\$17,191.63

\$17,191.63

200 Personnel Services – Employee Benefits

220 Social Security Contributions

1,449.65

1,449.65

230 PSERS Retirement Contributions

5,925.17

5,925.17

250 Unemployment Compensation

4.57

4.57

260 Workers' Compensation

154.05

154.05

270 Group Insurance – Self-Insurance

2,866.54

2,866.54

291 Other Retirement Plans

255.14

255.14

Total Personnel Services – Employee Benefits

\$10,655.12

\$10,655.12

Total 2850 State and Federal Agency Liaison Services

\$27,846.75

\$27,846.75

General Fund (10)

2900 Other Support Services

Elementary

Secondary

Federal

Total

500 Other Purchased Services

595 IU Payments By Withholding

136,742.58

596 Direct Payments To Intermediate Units

87,891.00

Total Other Purchased Services

\$224,633.58

Total 2900 Other Support Services

\$224,633.58

General Fund (10)

2910 Support Services Not Listed Elsewhere In the 2000 Series

Elementary

Secondary

Federal

Total

500 Other Purchased Services

595 IU Payments By Withholding

136,742.58

596 Direct Payments To Intermediate Units

87,891.00

Total Other Purchased Services

\$224,633.58

Total 2910 Support Services Not Listed Elsewhere In the 2000 Series

\$224,633.58

General Fund (10)

3000 Operation of Non-Instructional Services

Total

100 Personnel Services – Salaries

100 Personnel Services – Salaries 4,447,796.61

Total Personnel Services – Salaries \$4,447,796.61

200 Personnel Services – Employee Benefits

210 Group Insurance – Contracted Provider 1,976.90

220 Social Security Contributions 335,290.77

230 PSERS Retirement Contributions 1,199,257.33

250 Unemployment Compensation 3,171.91

260 Workers’ Compensation 99,609.75

270 Group Insurance – Self-Insurance 278,520.28

291 Other Retirement Plans 4,303.10

Total Personnel Services – Employee Benefits \$1,922,130.04

300 Purchased Professional and Technical Services

329 Professional Educational Services – Other 61,882.44

330 Other Professional Services 490,665.64

Total Purchased Professional and Technical Services \$552,548.08

400 Purchased Property Services

430 Repairs and Maintenance Services 5,472.17

Total Purchased Property Services \$5,472.17

500 Other Purchased Services

510 Student Transportation Services 1,721.80

549 Other Advertising/Public Relations 1,580.00

580 Travel 66,796.19

Total Other Purchased Services \$70,097.99

600 Supplies

610 General Supplies 681,856.22

620 Energy 25,000.00

630 Food 48,234.60

Total Supplies \$755,090.82

700 Property

762 Capitalized Equipment - Replacement 21,245.00

Total Property \$21,245.00

Total 3000 Operation of Non-Instructional Services \$7,774,380.71

General Fund (10)

3200 Student Activities

Elementary Secondary Federal Total

100 Personnel Services – Salaries

100 Personnel Services – Salaries 2,344,740.27

Total Personnel Services – Salaries \$2,344,740.27

200 Personnel Services – Employee Benefits

210 Group Insurance – Contracted Provider 370.67

220 Social Security Contributions 176,932.43

230 PSERS Retirement Contributions 678,580.10

250 Unemployment Compensation 604.55

260 Workers' Compensation 16,378.85

270 Group Insurance – Self-Insurance 72,199.74

291 Other Retirement Plans 3,028.21

Total Personnel Services – Employee Benefits \$948,094.55

300 Purchased Professional and Technical Services

330 Other Professional Services 468,441.64

Total Purchased Professional and Technical Services \$468,441.64

500 Other Purchased Services

510 Student Transportation Services 1,721.80

580 Travel 31,987.31

Total Other Purchased Services \$33,709.11

600 Supplies

610 General Supplies 441,028.02

620 Energy 25,000.00

Total Supplies \$466,028.02

700 Property

762 Capitalized Equipment - Replacement 21,245.00

Total Property \$21,245.00

Total 3200 Student Activities \$4,282,258.59

General Fund (10)

	<u>Elementary</u>	<u>Secondary</u>	<u>Federal</u>	<u>Total</u>
3300 Community Services				
100 Personnel Services – Salaries				
100 Personnel Services – Salaries				2,103,056.34
Total Personnel Services – Salaries				\$2,103,056.34
200 Personnel Services – Employee Benefits				
210 Group Insurance – Contracted Provider				1,606.23
220 Social Security Contributions				158,358.34
230 PSERS Retirement Contributions				520,677.23
250 Unemployment Compensation				2,567.36
260 Workers' Compensation				83,230.90
270 Group Insurance – Self-Insurance				206,320.54
291 Other Retirement Plans				1,274.89
Total Personnel Services – Employee Benefits				\$974,035.49
300 Purchased Professional and Technical Services				
329 Professional Educational Services – Other				61,882.44
330 Other Professional Services				22,224.00
Total Purchased Professional and Technical Services				\$84,106.44
400 Purchased Property Services				
430 Repairs and Maintenance Services				5,472.17
Total Purchased Property Services				\$5,472.17
500 Other Purchased Services				
549 Other Advertising/Public Relations				1,580.00
580 Travel				34,808.88
Total Other Purchased Services				\$36,388.88
600 Supplies				
610 General Supplies			6,608.84	240,828.20
630 Food			207.50	48,234.60
Total Supplies			\$6,816.34	\$289,062.80
Total 3300 Community Services			\$6,816.34	\$3,492,122.12

General Fund (10)

5000 Other Expenditures and Financing Uses

Total

800 Other Objects

830 Interest 4,063,193.77

Total Other Objects \$4,063,193.77

900 Other Uses of Funds

910 Redemption of Principal 12,005,000.00

939 Other Fund Transfers 28,646,000.00

Total Other Uses of Funds \$40,651,000.00

Total 5000 Other Expenditures and Financing Uses \$44,714,193.77

General Fund (10)

	<u>Elementary</u>	<u>Secondary</u>	<u>Federal</u>	<u>Total</u>
5100 Debt Service / Other Expenditures and Financing Uses				
800 Other Objects				
830 Interest				4,063,193.77
Total Other Objects				\$4,063,193.77
900 Other Uses of Funds				
910 Redemption of Principal				12,005,000.00
Total Other Uses of Funds				\$12,005,000.00
Total 5100 Debt Service / Other Expenditures and Financing Uses				\$16,068,193.77

LEA : 122092102 Central Bucks SD

Printed 1/17/2018 8:31:14 AM

General Fund (10)

	<u>Elementary</u>	<u>Secondary</u>	<u>Federal</u>	<u>Total</u>
5110 Debt Service				
800 Other Objects				
830 Interest				4,063,193.77
Total Other Objects				\$4,063,193.77
900 Other Uses of Funds				
910 Redemption of Principal				12,005,000.00
Total Other Uses of Funds				\$12,005,000.00
Total 5110 Debt Service				\$16,068,193.77

LEA : 122092102 Central Bucks SD

Printed 1/17/2018 8:31:14 AM

General Fund (10)

	<u>Elementary</u>	<u>Secondary</u>	<u>Federal</u>	<u>Total</u>
5200 Interfund Transfers – Out				
900 <u>Other Uses of Funds</u>				
939 Other Fund Transfers				28,646,000.00
Total Other Uses of Funds				\$28,646,000.00
Total 5200 Interfund Transfers – Out				\$28,646,000.00

General Fund (10)

5230 Capital Projects Fund Transfers

Elementary

Secondary

Federal

Total

900 Other Uses of Funds

939 Other Fund Transfers

28,646,000.00

Total Other Uses of Funds

\$28,646,000.00

Total 5230 Capital Projects Fund Transfers

\$28,646,000.00

Other Capital Projects Fund (39)

2000 Support Services

700 Property

762 Capitalized Equipment - Replacement

Total

3,341,182.00

Total Property

\$3,341,182.00

Total 2000 Support Services

\$3,341,182.00

LEA : 122092102 Central Bucks SD

Printed 1/17/2018 8:31:12 AM

Other Capital Projects Fund (39)

2200 Support Services – Instructional Staff

Elementary

Secondary

Federal

Total

700 Property

762 Capitalized Equipment - Replacement

2,007,551.00

2,007,551.00

Total Property

\$2,007,551.00

\$2,007,551.00

Total 2200 Support Services – Instructional Staff

\$2,007,551.00

\$2,007,551.00

LEA : 122092102 Central Bucks SD

Printed 1/17/2018 8:31:12 AM

Other Capital Projects Fund (39)

2240 Computer-Assisted Instruction Support Services

Elementary

Secondary

Federal

Total

700 Property

762 Capitalized Equipment - Replacement

2,007,551.00

2,007,551.00

Total Property

\$2,007,551.00

\$2,007,551.00

Total 2240 Computer-Assisted Instruction Support Services

\$2,007,551.00

\$2,007,551.00

Other Capital Projects Fund (39)

2700 Student Transportation Services

Elementary

Secondary

Federal

Total

700 Property

762 Capitalized Equipment - Replacement

1,333,631.00

1,333,631.00

Total Property

\$1,333,631.00

\$1,333,631.00

Total 2700 Student Transportation Services

\$1,333,631.00

\$1,333,631.00

LEA : 122092102 Central Bucks SD

Printed 1/17/2018 8:31:12 AM

Other Capital Projects Fund (39)

2790 Other Student Transportation Services

Elementary

Secondary

Federal

Total

700 Property

762 Capitalized Equipment - Replacement

1,333,631.00

1,333,631.00

Total Property

\$1,333,631.00

\$1,333,631.00

Total 2790 Other Student Transportation Services

\$1,333,631.00

\$1,333,631.00

Other Capital Projects Fund (39)

4000 Facilities Acquisition, Construction and Improvement Services

Total

400 Purchased Property Services

450 Construction Services

12,264,825.00

Total Purchased Property Services

\$12,264,825.00

Total 4000 Facilities Acquisition, Construction and Improvement Services

\$12,264,825.00

Other Capital Projects Fund (39)

4500 Building Acquisition and Construction Services – Original and Additional

Elementary

Secondary

Federal

Total

400 Purchased Property Services

450 Construction Services

6,980,247.00

6,980,247.00

Total Purchased Property Services

\$6,980,247.00

\$6,980,247.00

Total 4500 Building Acquisition and Construction Services – Original and Additional

\$6,980,247.00

\$6,980,247.00

Other Capital Projects Fund (39)

4600 Existing Building Improvement Services

Elementary

Secondary

Federal

Total

400 Purchased Property Services

450 Construction Services

5,284,578.00

5,284,578.00

Total Purchased Property Services

\$5,284,578.00

\$5,284,578.00

Total 4600 Existing Building Improvement Services

\$5,284,578.00

\$5,284,578.00

	<u>General Fund(10)</u>	<u>Public Purpose Trust(27)</u>	<u>Other Compt Approved (28)</u>	<u>Athletic / Activity(29)</u>	<u>Capital Reserve (690, 1850)(31)</u>
1000 Instruction					
1100 Regular Programs - Elementary / Secondary	131,370,598.56				
1200 Special Programs - Elementary / Secondary	40,853,675.74				
1300 Vocational Education	4,351,610.77				
1400 Other Instructional Programs - Elementary / Secondary	3,388,983.55				
1500 Nonpublic School Programs	4,153.00				
Total Instruction	\$179,969,021.62				
2000 Support Services					
2100 Support Services - Students	13,557,042.24				
2200 Support Services - Instructional Staff	11,037,405.37				
2300 Support Services - Administration	13,744,709.58				
2400 Support Services - Pupil Health	4,437,433.62				
2500 Support Services - Business	1,577,025.64				
2600 Operation and Maintenance of Plant Services	24,813,967.23				
2700 Student Transportation Services	18,913,991.14				
2800 Support Services - Central	3,378,805.41				
2900 Other Support Services	224,633.58				
Total Support Services	\$91,685,013.81				
3000 Operation of Non-Instructional Services					
3200 Student Activities	4,282,258.59				
3300 Community Services	3,492,122.12				
Total Operation of Non-Instructional Services	\$7,774,380.71				
4000 Facilities Acquisition, Construction and Improvement Services					
4500 Building Acquisition and Construction Services - Original and Additional					
4600 Existing Building Improvement Services					
Total Facilities Acquisition, Construction and Improvement Services					
5000 Other Expenditures and Financing Uses					
5100 Debt Service / Other Expenditures and Financing Uses	16,068,193.77				
5200 Interfund Transfers - Out	28,646,000.00				
Total Other Expenditures and Financing Uses	\$44,714,193.77				
TOTAL ACTUAL EXPENDITURES & OTHER FINANCING USES	\$324,142,609.91				

	<u>Capital Reserve (1431)(32)</u>	<u>Other Capital Projects Fund(39)</u>	<u>Debt Service(40)</u>	<u>Permanent(90)</u>	<u>Total</u>
1000 Instruction					
1100 Regular Programs - Elementary / Secondary					131,370,598.56
1200 Special Programs - Elementary / Secondary					40,853,675.74
1300 Vocational Education					4,351,610.77
1400 Other Instructional Programs - Elementary / Secondary					3,388,983.55
1500 Nonpublic School Programs					4,153.00
Total Instruction					\$179,969,021.62
2000 Support Services					
2100 Support Services - Students					13,557,042.24
2200 Support Services - Instructional Staff		2,007,551.00			13,044,956.37
2300 Support Services - Administration					13,744,709.58
2400 Support Services - Pupil Health					4,437,433.62
2500 Support Services - Business					1,577,025.64
2600 Operation and Maintenance of Plant Services					24,813,967.23
2700 Student Transportation Services		1,333,631.00			20,247,622.14
2800 Support Services - Central					3,378,805.41
2900 Other Support Services					224,633.58
Total Support Services		\$3,341,182.00			\$95,026,195.81
3000 Operation of Non-Instructional Services					
3200 Student Activities					4,282,258.59
3300 Community Services					3,492,122.12
Total Operation of Non-Instructional Services					\$7,774,380.71
4000 Facilities Acquisition, Construction and Improvement Services					
4500 Building Acquisition and Construction Services - Original and Additional		6,980,247.00			6,980,247.00
4600 Existing Building Improvement Services		5,284,578.00			5,284,578.00
Total Facilities Acquisition, Construction and Improvement Services		\$12,264,825.00			\$12,264,825.00
5000 Other Expenditures and Financing Uses					
5100 Debt Service / Other Expenditures and Financing Uses					16,068,193.77
5200 Interfund Transfers - Out					28,646,000.00
Total Other Expenditures and Financing Uses					\$44,714,193.77
TOTAL ACTUAL EXPENDITURES & OTHER FINANCING USES		\$15,606,007.00			\$339,748,616.91

PSERS Salary Data (Salary Data should relate to the General Fund only)

Amount Description	Amount
Total Salary Base for salaries subject to PSERS withholding	151,695,268.43
Total Federally Funded salaries subject to PSERS withholding	3,583,624.68
	<hr/>

Title I Expenditure Data

Amount Description	Amount
Expenditures Funded with Current Title I Funds	617,884.00
Expenditures Funded with Carry over Title I Funds	
Total Title I Expenditure Data	<hr/> \$617,884.00 <hr/>

Title I ARRA Amount

Amount Description	Amount
Portion of Total Title I Expenditures funded with ARRA Title I	<hr/>

Benefits for Staff Relative to Collective Bargaining Agreements

	OBJECT	COVERED	NOT COVERED	TOTAL
10 General Fund				
	211 Medical Insurance			
	212 Dental Insurance			
	215 Eye Care Insurance			
	216 Prescription Insurance			
	271 Self-Insurance Medical Benefits	20,474,853.01	1,077,623.84	21,552,476.85
	272 Self-Insurance Dental Benefits	1,165,328.91	61,333.10	1,226,662.01
	275 Self-Insurance Eye Care Benefits			
	276 Self-Insurance Prescription Benefits	5,883,922.25	309,680.12	6,193,602.37
	FUND TOTAL	\$27,524,104.17	\$1,448,637.06	\$28,972,741.23
50 Enterprise Fund	No Self Insurance data to report			
	211 Medical Insurance			
	212 Dental Insurance			
	215 Eye Care Insurance			
	216 Prescription Insurance			
	271 Self-Insurance Medical Benefits			
	272 Self-Insurance Dental Benefits			
	275 Self-Insurance Eye Care Benefits			
	276 Self-Insurance Prescription Benefits			
	FUND TOTAL			
60 Internal Service Fund	No Self Insurance data to report			
	211 Medical Insurance			
	212 Dental Insurance			
	215 Eye Care Insurance			
	216 Prescription Insurance			
	271 Self-Insurance Medical Benefits			
	272 Self-Insurance Dental Benefits			
	275 Self-Insurance Eye Care Benefits			
	276 Self-Insurance Prescription Benefits			
	FUND TOTAL			
Total of All Funds		\$27,524,104.17	\$1,448,637.06	\$28,972,741.23

LEA : 122092102 Central Bucks SD

Printed 1/17/2018 8:31:20 AM

Function	Special Education (Prior Year)	Nonspecial Education (Prior Year)	Total (Prior Year)	Special Education (Current Year)	Nonspecial Education (Current Year)	Total (Current Year)
2120 Guidance Services	2,558,668.11	4,648,847.68	7,207,515.79	2,600,898.73	4,830,240.51	7,431,139.24
2140 Psychological Services	1,617,807.17	179,756.35	1,797,563.52	1,783,481.83	198,164.65	1,981,646.48
2150 Speech Pathology and Audiology Services	1,764,161.57	196,017.95	1,960,179.52	1,924,234.34	213,803.81	2,138,038.15
2160 Social Work Services						
2260 Instruction and Curriculum Development Services	86,138.51	1,636,631.60	1,722,770.11	92,301.16	1,753,722.09	1,846,023.25
2350 Legal and Accounting Services	59,012.67	160,339.83	219,352.50	43,087.09	73,481.32	116,568.41
2420 Medical Services						
2440 Nursing Services						
2700 Student Transportation Services	1,722,618.01	16,410,203.10	18,132,821.11	1,874,849.14	16,873,642.00	18,748,491.14
Total	\$7,808,406.04	\$23,231,796.51	\$31,040,202.55	\$8,318,852.29	\$23,943,054.38	\$32,261,906.67

(PRINCIPAL AMOUNTS ONLY)

GOVERNMENTAL FUNDS/ ACTIVITIES

	Short-Term Borrowing	General Obligation Bonds/Notes	Authority Building Obligations	Other Long-Term Debt	Other Post-Employment Benefits (OPEB)	Compensated Absences	Net Pension Liability	Total
1. Debt at Beginning of Fiscal Year		87,400,000.00			12,080,412.00	1,789,748.00	475,386,000.00	576,656,160.00
2. Additional Debt Incurred During Year					3,691,489.00		79,650,000.00	83,341,489.00
3. Retirements and Repayments		12,005,000.00				7,383.00		12,012,383.00
4. Debt at End of Fiscal Year		75,395,000.00			15,771,901.00	1,782,365.00	555,036,000.00	647,985,266.00
5. Accreted Interest at End Of Fiscal Year								
6. Total Debt and Accreted Interest		75,395,000.00			15,771,901.00	1,782,365.00	555,036,000.00	647,985,266.00
7. Current Portion P&I - Due within 1 year		14,590,144.00						14,590,144.00
8. Interest Paid during current fiscal year		4,063,194.00						4,063,194.00

(PRINCIPAL AMOUNTS ONLY)

PROPRIETARY FUNDS

- 1. Debt at Beginning of Fiscal Year
- 2. Additional Debt Incurred During Year
- 3. Retirements and Repayments
- 4. Debt at End of Fiscal Year
- 5. Accreted Interest at End Of Fiscal Year
- 6. Total Debt and Accreted Interest
- 7. Current Portion P&I - Due within 1 year
- 8. Interest Paid during current fiscal year

Total Principal and Interest Payments Made by Your School - All Funds

Function	Fund		Principal (910)	Principal (920)	Interest (830)	Total (Principal +Interest)	Misc Other Uses (990)
5110	10	General Fund	12,005,000.00		4,063,193.77	16,068,193.77	
5110	20	Special Revenue Funds					
5110	30	Capital Projects Funds					
5110	40	Debt Service Fund					
5110	90	Permanent Fund					
5120	10	General Fund					
5120	20	Special Revenue Funds					
5120	30	Capital Projects Funds					
5120	40	Debt Service Fund					

Total Debt Payments - Governmental Funds			\$12,005,000.00		\$4,063,193.77	\$16,068,193.77	
---	--	--	------------------------	--	-----------------------	------------------------	--

Function	Fund		Principal (910)	Principal (920)	Interest (830)	Total (Principal +Interest)
5110	50	Enterprise Fund				
5110	60	Internal Service Fund				
5120	50	Enterprise Fund				
5120	60	Internal Service Fund				

Total Debt Payments - Proprietary Funds						
--	--	--	--	--	--	--

Debt Details
Governmental Funds/ Activities

Debt Category	Debt Issue Date (MM/YYYY)	Principal Amounts Only			Debt at End of Fiscal Year	Current Portion Due Within One Year (Principal and Interest)	Interest Paid During Fiscal Year
		Debt at Beginning of Fiscal Year	Additions	Reductions / Repayments			
General Obligation Bonds/Notes – CIB	04/2011	3,425,000.00		2,400,000.00	1,025,000.00	269,300.00	116,300.00
General Obligation Bonds/Notes – CIB	04/2011	53,745,000.00		3,560,000.00	50,185,000.00	6,736,594.00	2,463,394.00
General Obligation Bonds/Notes – CIB	04/2011	1,150,000.00		1,150,000.00			39,100.00
General Obligation Bonds/Notes – CIB	02/2007	28,120,000.00		3,935,000.00	24,185,000.00	7,584,250.00	1,406,000.00
General Obligation Bonds/Notes – CIB	03/2007	960,000.00		960,000.00			38,400.00
Compensated Absences		1,789,748.00		7,383.00	1,782,365.00		
Other Post-Employment Benefits (OPEB)		12,080,412.00	3,691,489.00		15,771,901.00		
Net Pension Liability		475,386,000.00	79,650,000.00		555,036,000.00		
Totals for Debt Entered:		\$576,656,160.00	\$83,341,489.00	\$12,012,383.00	\$647,985,266.00	\$14,590,144.00	\$4,063,194.00

General Fund (10)

Section 1: Tuition/Purchased Services as Reported within Expenditure Detail

	Amount
Tuition Reported in General Fund Expenditures 1000-560	9,425,956.31
Purchased Services in General Fund Expenditures 1000-594 and 1000-597	2,472.44

Section 1 Total	\$9,428,428.75
------------------------	-----------------------

Section 2: Tuition Paid to Institution Types During Fiscal Year

	Tuition Paid For Nonspecial Education	Tuition Paid For Special Education	Total
1 1306 Institutions		51,348.31	51,348.31
2 Institutionalized Children's Programs		2,472.44	2,472.44
3 Juveniles Incarcerated in Adult Facilities	341,145.17		341,145.17
4 Residential Treatment Facilities	33,592.25		33,592.25
5 Other Local Education Agencies			
6 Brick and Mortar Charter Schools			
7 Cyber Charter Schools	963,943.27	419,510.21	1,383,453.48
8 Career and Technology Centers	2,393,385.92	1,958,224.85	4,351,610.77
9 Approved Private Schools		1,472,547.94	1,472,547.94
10 PA Chartered Schools for the Deaf and Blind			
11 Private Residential Rehabilitative Institutions	12,142.54		12,142.54
12 Juvenile Detention Centers	50,451.28	58,916.56	109,367.84
13 Special Program Jointures			
14 Other Tuition Not Included Elsewhere In This Section	236,292.38	1,434,455.63	1,670,748.01

Section 2 Total	\$4,030,952.81	\$5,397,475.94	\$9,428,428.75
------------------------	-----------------------	-----------------------	-----------------------

1 .	<u>Student Transportation Services for Educational Field Trips</u>	341,175.62
2 .	<u>Student Transportation Services for Student Activities</u>	154,114.16
3 .	<u>Rental of Vehicles for Student Transportation Services</u>	
4 .	<u>Capital Reserve Funds</u>	210,185.49

Include only district-owned transportation expenditures paid from State or local money.
 DO NOT include federal expenditures or payments to contract service providers.
 Contracted transportation services should not be recorded on this schedule.

Food Service / Cafeteria Operations Fund (51)

3000 Operation of Non-Instructional Services

Total

300 Purchased Professional and Technical Services

329 Professional Educational Services – Other	30,344.00
340 Technical Services	1,955.00

Total Purchased Professional and Technical Services	\$32,299.00
--	--------------------

400 Purchased Property Services

430 Repairs and Maintenance Services	505,313.76
--------------------------------------	------------

Total Purchased Property Services	\$505,313.76
--	---------------------

500 Other Purchased Services

570 Food Service Management	4,194,169.00
-----------------------------	--------------

Total Other Purchased Services	\$4,194,169.00
---------------------------------------	-----------------------

600 Supplies

610 General Supplies	48,665.00
----------------------	-----------

Total Supplies	\$48,665.00
-----------------------	--------------------

700 Property

740 Depreciation	180,461.81
------------------	------------

Total Property	\$180,461.81
-----------------------	---------------------

800 Other Objects

810 Dues and Fees	13,641.16
890 Miscellaneous Expenditures	16,420.73

Total Other Objects	\$30,061.89
----------------------------	--------------------

Total 3000 Operation of Non-Instructional Services	\$4,990,970.46
---	-----------------------

Food Service / Cafeteria Operations Fund (51)

	<u>Elementary</u>	<u>Secondary</u>	<u>Federal</u>	<u>Total</u>
3100 Food Services				
300 <u>Purchased Professional and Technical Services</u>				
329 Professional Educational Services – Other				30,344.00
340 Technical Services				1,955.00
Total Purchased Professional and Technical Services				\$32,299.00
400 <u>Purchased Property Services</u>				
430 Repairs and Maintenance Services				505,313.76
Total Purchased Property Services				\$505,313.76
500 <u>Other Purchased Services</u>				
570 Food Service Management				4,194,169.00
Total Other Purchased Services				\$4,194,169.00
600 <u>Supplies</u>				
610 General Supplies				48,665.00
Total Supplies				\$48,665.00
700 <u>Property</u>				
740 Depreciation				180,461.81
Total Property				\$180,461.81
800 <u>Other Objects</u>				
810 Dues and Fees				13,641.16
890 Miscellaneous Expenditures				16,420.73
Total Other Objects				\$30,061.89
Total 3100 Food Services				\$4,990,970.46

	<u>Food Service(51)</u>	<u>Child Care Operations(52)</u>	<u>Other Enterprise(58)</u>	<u>Internal Service(60)</u>	<u>Total</u>
3000 <u>Operation of Non-Instructional Services</u>					
3100 Food Services	4,990,970.46				4,990,970.46
Total Operation of Non-Instructional Services	\$4,990,970.46				\$4,990,970.46
TOTAL ACTUAL EXPENDITURES & OTHER FINANCING USES	\$4,990,970.46				\$4,990,970.46